

# Television and Radio Center of the VPRO Public Broadcasting Corporation

## VPRO公共广播公司广播电视中心

客户 VPRO广播公司

地址 Mediapark, Hilversum, The Netherlands

建筑设计 MVRDV建筑设计事务所

合作设计 Bureau Bouwkunde, Harleem, Netherlands

建筑面积 10 500m<sup>2</sup>

预算 1 000万欧元

共同策划 荷兰哈勒姆市工程局

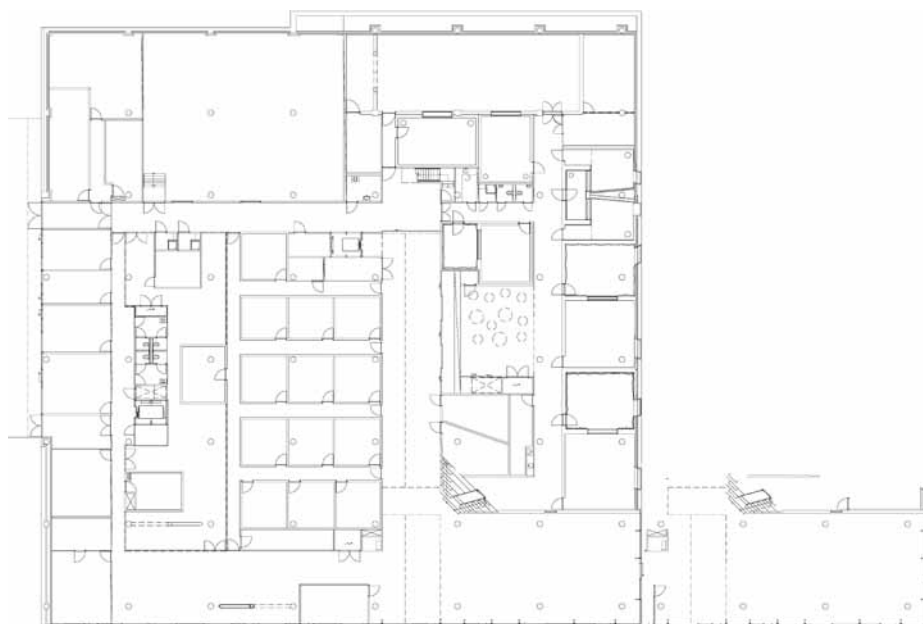
结构 荷兰哈勒姆市工程局、英国伦敦奥雅纳全球公司

建筑物理 荷兰阿纳姆地质和矿产资源部



摄影: Rob't Ham

# enter ion

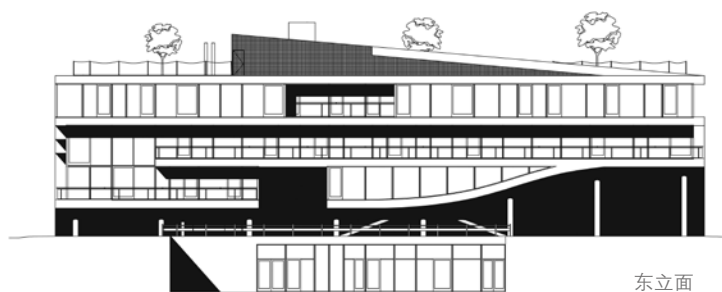


一层平面

VPRO广播电视中心可以用一系列词语来形容，例如“紧凑的空间”、“空间的精密分割”等，以及建筑与基地环境间的关系。鉴于此地现有的区域规划边界和最大建筑高度等城镇规划限制，这些紧凑的条件使之成为“荷兰最深的办公大楼”。空间的精确定位既为室内带来了自然采光，又获得了良好的室外景观，从而形成了一个开放式的办公场所，室内和室外的差异也变得模糊了。

覆盖草皮的建筑屋顶取代了基地上原有的各种植被，屋顶下面是类似于“地质构造”的不同楼层。这些楼层的空间通过一系列手法相互连接，例如坡道、台阶式楼板、巨大的踏步和小范围的楼面升起等，提供了一条直达屋顶的流线。不同高度之间连接组成连续的室内空间，与空隙所产生的翼型空间一起，满足了不同工种、不同工作背景的使用者，也适应了VPRO办公类型不断变化的需求。新办公楼的休息室、阁楼、大厅、内院和室外平台都与原来的办公环境逐一对应。（译/张岩，校/李昭君）





东立面



南立面

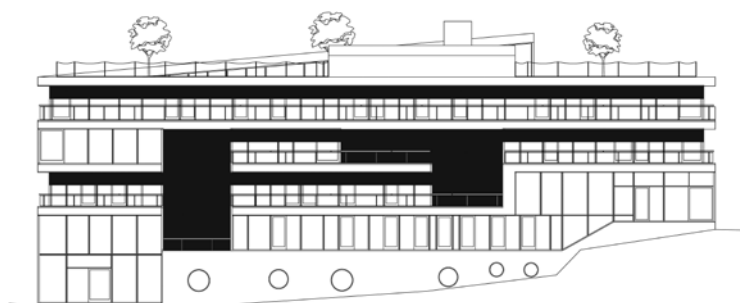




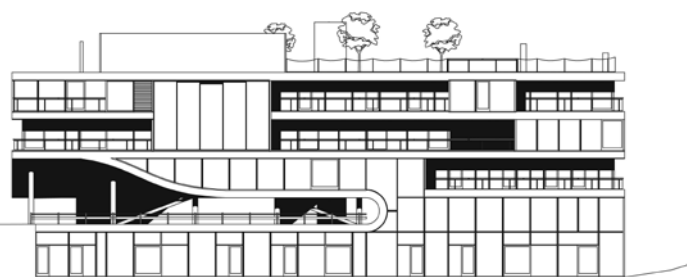
摄影：Rob't Hart



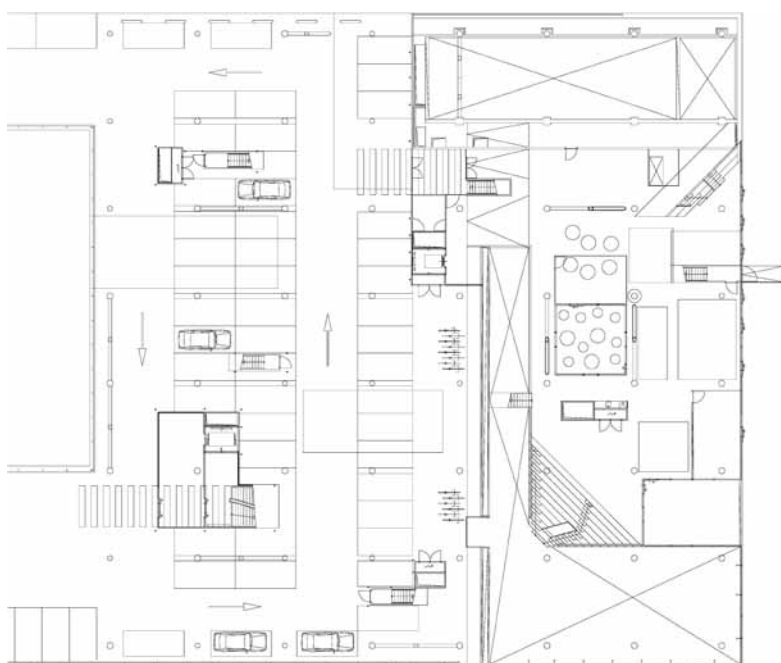
摄影：Hans Werlemann



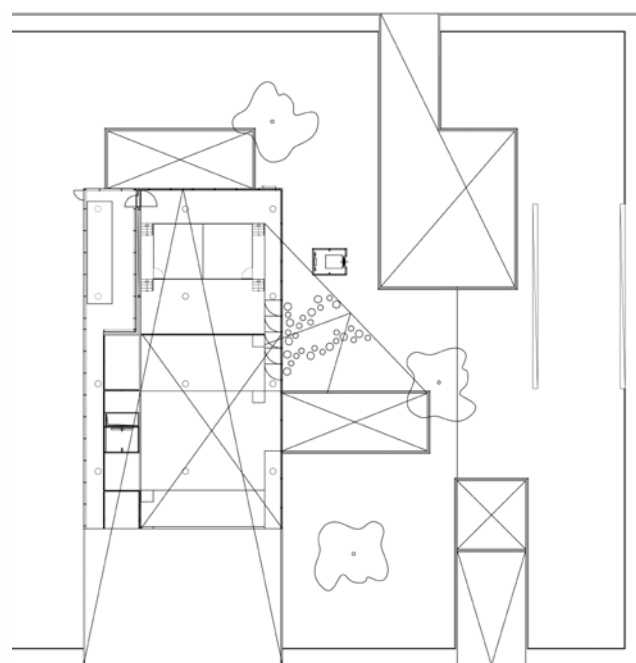
西立面



北立面



二层平面



五层平面





摄影：Hans Werlemann



摄影：Hans Werlemann



摄影：Rob't Hart

The VPRO Television and Radio Center can be described using terms such as ‘compactness’ and ‘spatial differentiation’ and in terms of its relationship to the landscape around it. Given the present town-planning restrictions on the site – zoning plan boundaries and maximum building heights – compactness has led to ‘the deepest office building in the Netherlands’ .A precise positioning of voids allows the access of natural light to be combined with views over the surroundings. The result is an open-plan office where the difference between inside and outside is vague.

The greenery that stood where the building now stands has been replaced with a raised grass covered roof under which lies a ‘geological formation’ of different floors. These floors are connected to one another by spatial devices such as ramps, stepped floors, monumental steps and small rises, thus providing a route to the roof. The differences in height in the resulting continuous interior, combined with the wings created by the gaps, facilitate a wide range of work contexts in different office typologies to meet the ever changing demands imposed by VPRO’ s business. Lounge, attic, hall, patio and terrace types all serve to echo the old premises. 