

# Thor Heyerdahl College, Norway

Thor Heyerdahl 学院，挪威

客户 Vestfold Municipality

建筑设计 schmidt hammer lassen architects

工程师 Multiconsult

面积 28 000 m<sup>2</sup>

造价 € 75 million excl. VAT

竞赛 2005, 1st prize in restricted international competition

建设时间 2007–2009

摄影 Jiri Havren





摄影：Jiri Havren





摄影: Jiri Havren



摄影: Jiri Havren

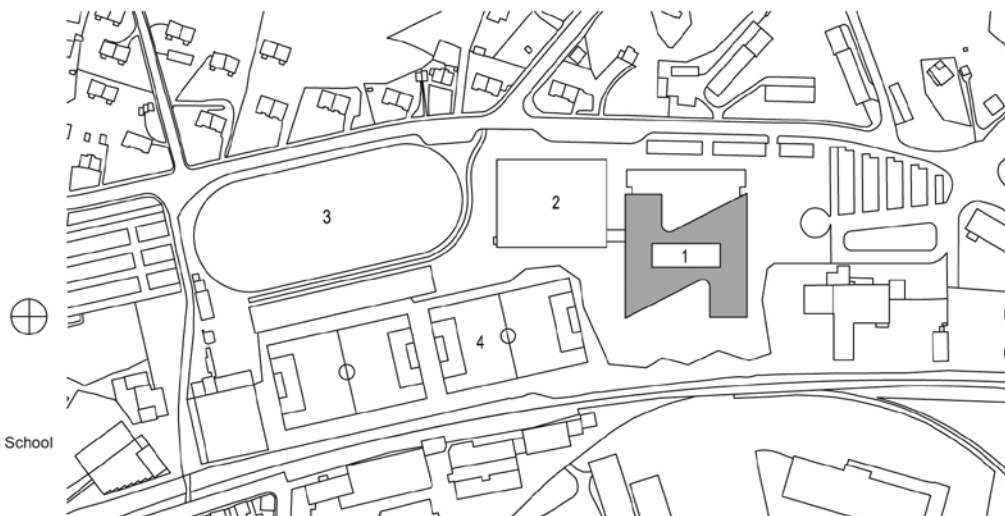


摄影: Jiri Havren



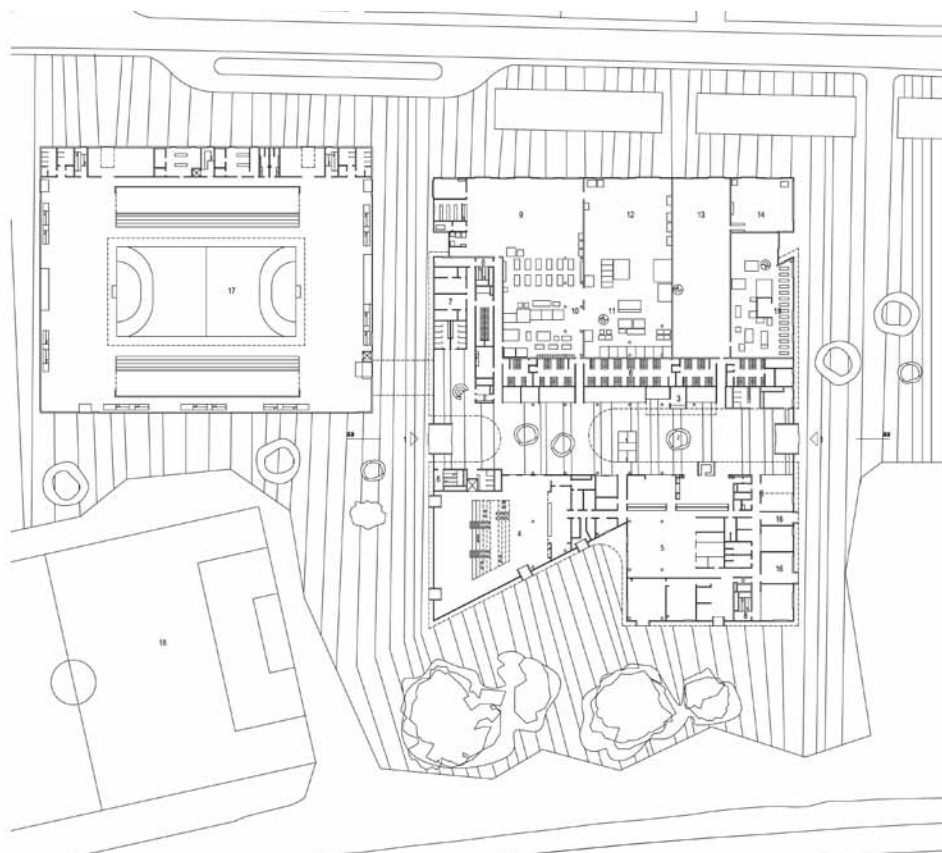


- 1 THVS, Thor Heyerdal School
- 2 Arena, Sports hall
- 3 Skating rink
- 4 Playing fields



区位图

- 1 Main entrance
- 2 Meeting point
- 3 Reception
- 4 Canteen
- 5 Service Kitchen
- 6 Cloakroom
- 7 Changing room
- 8 Staircase
- 9 Vehicles
- 10 Machines
- 11 Welding
- 12 Working machines
- 13 Mock up
- 14 Workshop
- 15 Wood workshop
- 16 Maintenance

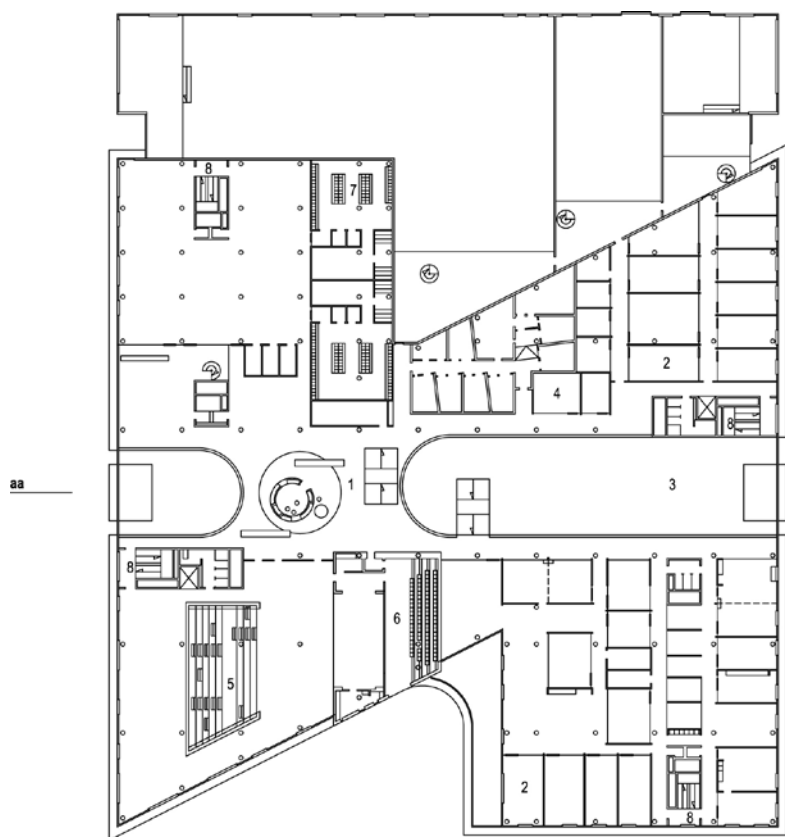


首层平面

拥有近28 000m<sup>2</sup>校园，1 650学生和300名员工的Thor Heyerdahl学院在建成后将成为挪威最大的预科学校之一。这个学院是由青年教育计划大名单中的5所学校合并而成的，形成了跨学科的协同工作与教学，实现了真正意义上的社区精神。

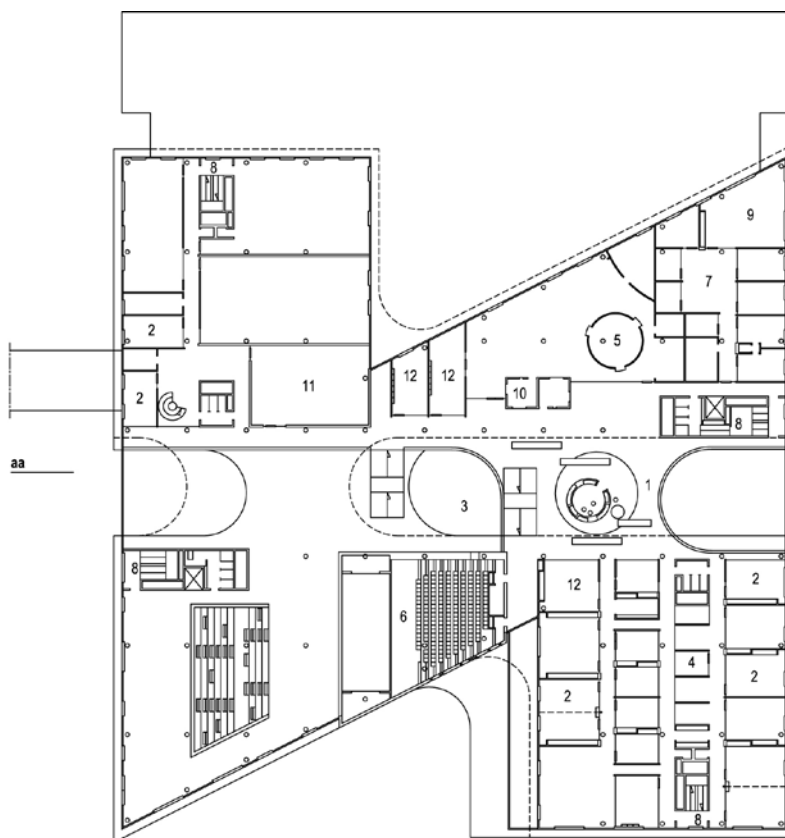
新大楼将学校的各种元素聚集在一个紧凑、灵活和垂直的建筑体量之中，此种分层设计虽然简单但十分有效。主体结构包含一个露天广场平台，为了让自然光进入建筑的内部，主体结构在相应位置上进行了开口。广场上的平台相应地在建筑的轴线上旋转了180°，创造出一系列的单层空间区域来容纳传统的教学活动和分组活动，而双层的空间则作为公共设施的区域，如礼堂、餐厅和图书馆。





二层平面

- 1 Meeting point
- 2 Learning
- 3 Atrium
- 4 Group room
- 5 Bleacher seating stair
- 6 Auditorium
- 7 Cloakroom
- 8 Staircase



三层平面

- 1 Meeting point
- 2 Learning
- 3 Atrium
- 4 Administration, office
- 5 Administration, conference
- 6 Small auditorium
- 7 Large office spaces
- 8 Staircase
- 9 Group room
- 10 Meeting room
- 11 Maintenance office







摄影：Jiri Havren

旋转的效果和相应的平台错位在室外创造出层层收进的外观效果，同时在室内承担起楼层之间的视觉联系功能。这个旋转形成的伸缩和扭转也围合出了一片中庭，扩大了顶部的空间，使更多的自然光进入室内。这个项目还包括一个可以容纳4 000多名观众的独立体育场：这个多功能的设施将用作体育课的场地和本市足球队的主场，以及承办音乐会和其他文化活动。学院拥有4条轴线，形成一套完整的动态设计风格，意在推动学术探索、知识共享和整个学生社区与社会的互动。为了表彰Thor先生的高风亮节，学校用他的名字命名，在设计上也做了一番视觉上的隐喻。（译/张岩，校/朱晓琳）

Thor Heyerdahl College with almost 28,000 square metres, 1,650 students and 300 staff will be one of Norway's largest sixth-form colleges, bringing together five schools from a broad spectrum of youth education programmes and creating interdisciplinary synergy, coherence and a real sense of community spirit.

The layered design for the new building is simple but effective, clustering the various elements of the school in a compact, flexible and vertically oriented building. The main structure comprises an open square plate into which openings have been incised, allowing natural light to penetrate deep into the building. A corresponding plate above is turned 180 degrees on the axis of the building, creating a series of single-height areas accommodating traditional teaching/learning activities and workshop activities, while double-height spaces house communal facilities such as an auditorium, the canteen and the library.

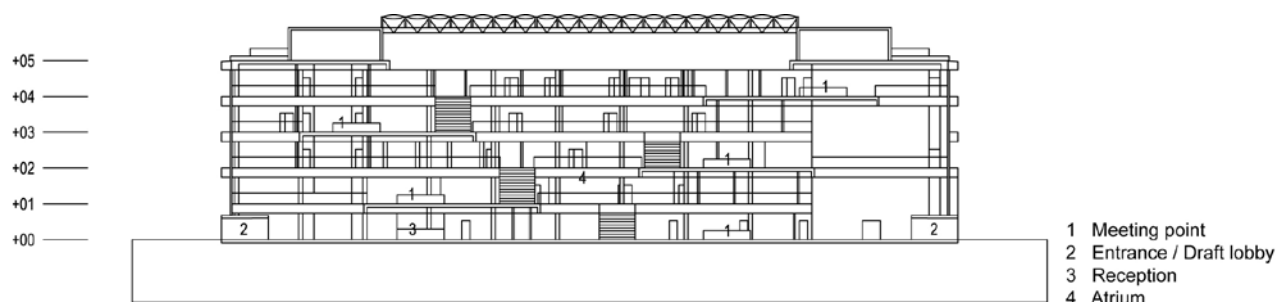




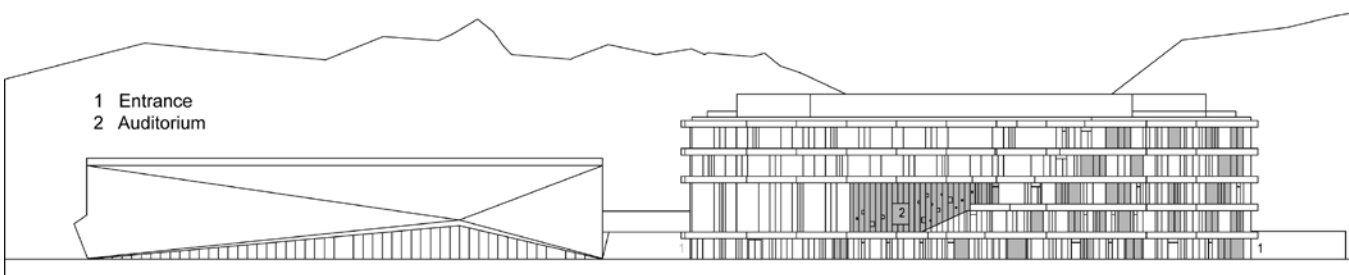
摄影: Jiri Havren



摄影: Jiri Havren



aa剖面



南立面





摄影: Jiri Havren



摄影: Jiri Havren



摄影: Jiri Havren

The rotational effect and corresponding plate displacement creates outdoor terraces, while internally providing visual connections between floors. The lift and twist created by this rotation also creates a central space, which widens towards the top and increases the natural light flooding into the building. The scheme will include a separate sports arena for 4,000 spectators: this multi-functional facility will be used for sports classes and as the home ground for the handball team of the city, as well as for concerts and other cultural events. The arena will strengthen links between the student population and the wider community. The dynamic design of the college, with its four distinct axes, is intended to create opportunities for academic exploration, knowledge sharing and social interaction right across the student community, as a visual metaphor honouring the ethos of the man after whom the college is named. **At**