

Bakkegaarden School

Bakkegaarden学校



客户 The Municipality of Gentofte

地点 Skolebakken, Gentofte, DK

建筑设计 CEBRA

合作设计 SRL Architects, SKUB and Kragh & Berglund

建成时间 2006

建筑规模 6 200m² (新建), 1 800 m² (改建)

获奖 Nominated for the Mies van der Rohe award 2006



作为根措夫特市所有学校开发项目的一部分，该项目集开发、重建和扩建于一体，包括原校舍3个班的重建与约1 800m²的体育中心、报告厅和食堂的扩建部分。

新建部分将起到景观的作用，从不同的层面与重建的校舍相连，恰到好处地为学校的教学和休闲营造出新的空间。新的体育中心、主教学楼中的礼堂、旧体育馆中的教育服务中心、咖啡厅和展示期间展馆的工作间被组织在一起，作为一个连贯的共同活动室使用。建筑的屋顶成为一个抬高的庭院，这就为室外活动区域的拓展提供了新的可能。屋顶设有道路以连接周围的主要道路、展馆工作间、室外展场，以及学生宿舍和课外自修室。

室外区域是学校教学空间的一个重要组成部分，因此从校舍内部到室外区域是否有方便的道路至关重要。通过学校开放性的设计，室内和室外将自然而然地促进互动的教学。室外设施应给人一种安全的感觉，同时探索以更多不同的方式来重新定义其可能性。

随着新体育中心的建成，Bakkegaard不仅仅是一所学校，同时也是一个公共场所，一个可以让学校与当地社区进行互动的场所。由于体育中心位于校园的中心位置，它将成为学校活力的源泉。同时因其在使用功能上的多种可能性，在一天的任何时间，学生和教职员工随时可能在体育中心碰面，对于其他使用者也是一样。

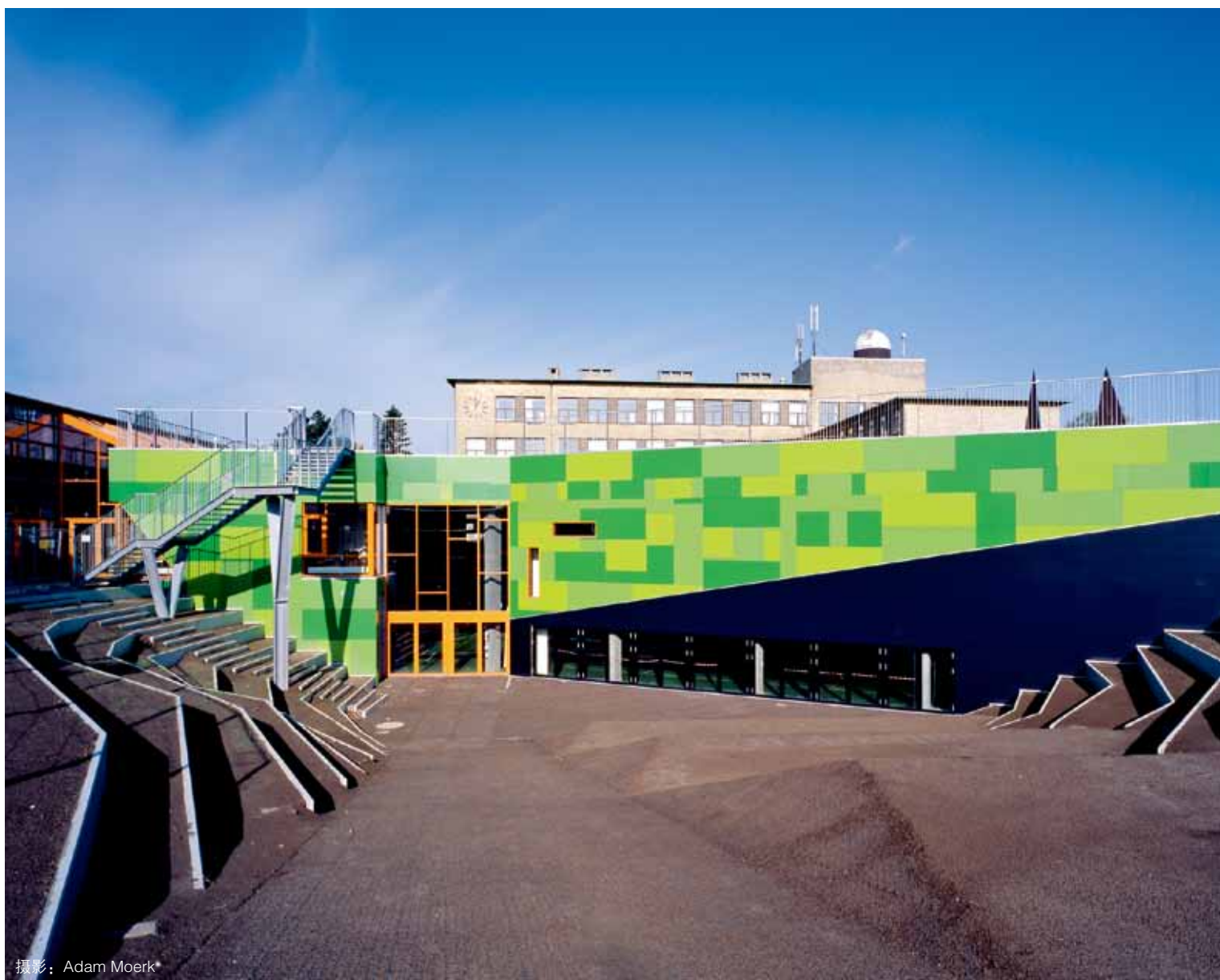
在这个项目中，我们更多关注了学校在自身价值、新工作方式施行框架和展望上的持续发展。因而有必要建立一个开放的流程，给所有参与者留出空间，使得所有人都在这一过程中变得更加充满智慧。
(译/张岩，校/吴春花)



摄影: Kragh&Berglund_Landskabsarkitekter_A_S



摄影: Kragh&Berglund_Landskabsarkitekter_A_S



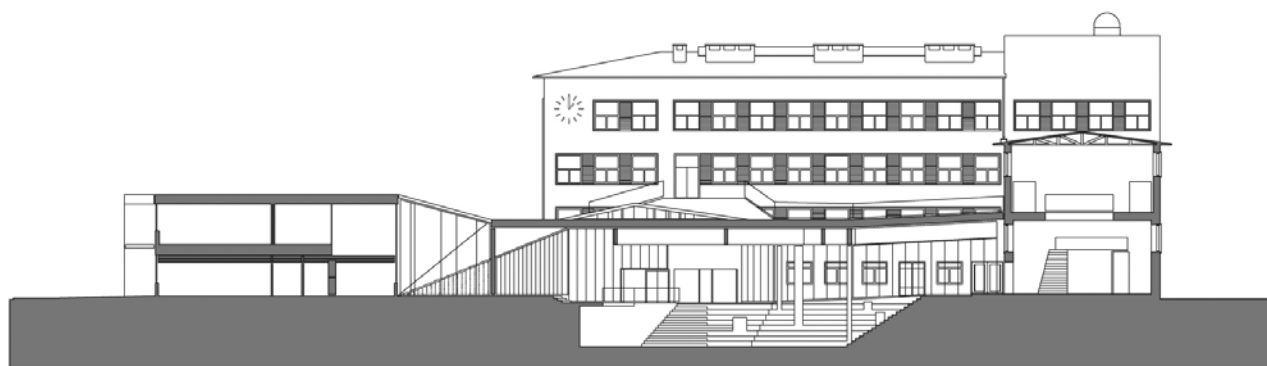
摄影: Adam Moerk



摄影: Kragh&Berglund_Landskabsarkitekt A/S



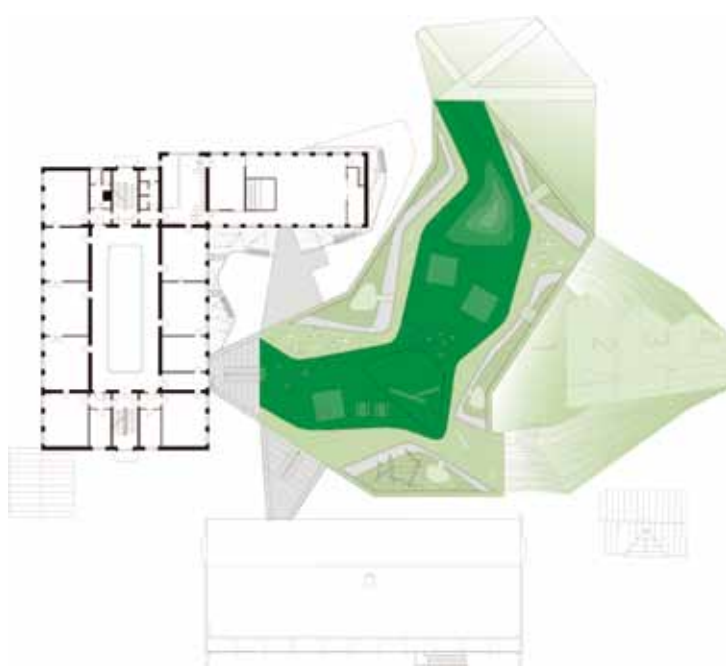
摄影: Kragh&Berglund_Landskabsarkitekt A/S



剖面

The project is a combination of development, rebuilding and extension and it forms part of a school development project – including all schools in the municipality of Gentofte. The project involves rebuilding of the existing school with three-form entry as well as the building of an extension of approximately 1 800 m² containing sports centre, lecture hall and canteen.

The new building acts as a landscape connecting the school on several levels, and new spaces are created for the common use of school and leisure. The new sports centre, the assembly hall in the main building, the educational service centre in the old gyms and the café and workshops in the pavilion used during the introductory period are woven together and act as one coherent room for common activities. The roof of the building is an elevated school yard, which opens for new possibilities for exploitation of the outdoor areas. From the roof there is connection down to the main access roads, the pavilion with workshops and the playground for the introductory period as well as up to the pupils' home quarters and project rooms.



屋顶平面



体育馆层平面



摄影：Adam Moerk



摄影：Kragh&Berglund_Landskabsarkitekter_A_S

The outdoor areas form an essential part of the educational spaces of the school. It is consequently of decisive importance that there is easy access from the school buildings to the open air. By opening up the school, the indoor and outdoor areas will form an educational point of view interact naturally. The outdoor facilities should emanate a feeling of security and be challenging at the same time, with a possibility of defining them in many different ways and in many different connections.

With the new sports centre Bakkegaard is no longer only a school but a forum where the school interacts with the local community. Due to the central position of the sports centre it will become the pulsating heart of the school. With the many possibilities and functions offered by the sports centre it will become the natural meeting point in the school for pupils and employees as well as others using it for leisure from early morning till late in the night.

With this project we have paid much attention to the continuous development where the values of the school, sketches of physical frames and visions for new ways of working influence each other in a common, progressive process. It was essential to create an open process giving room for all participants to become wiser during the progress. **AT**