

The School at Bülowssvej

Bülowssvej学校

客户 The municipality of Frederiksberg

地点 Frederiksberg, Denmark

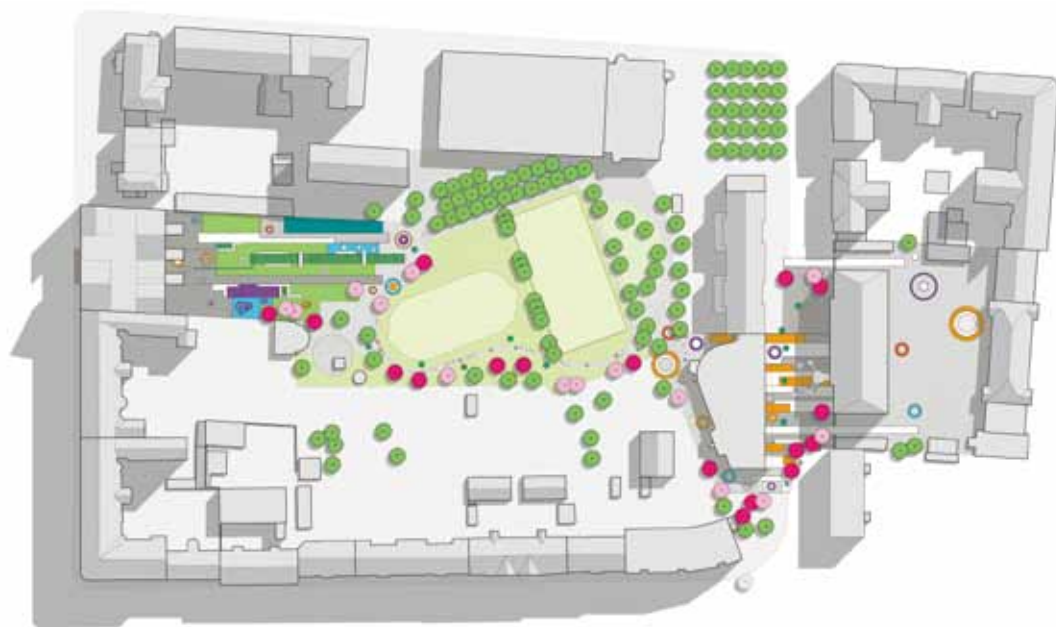
建筑设计 CEBRA

合作设计 LIW Planning

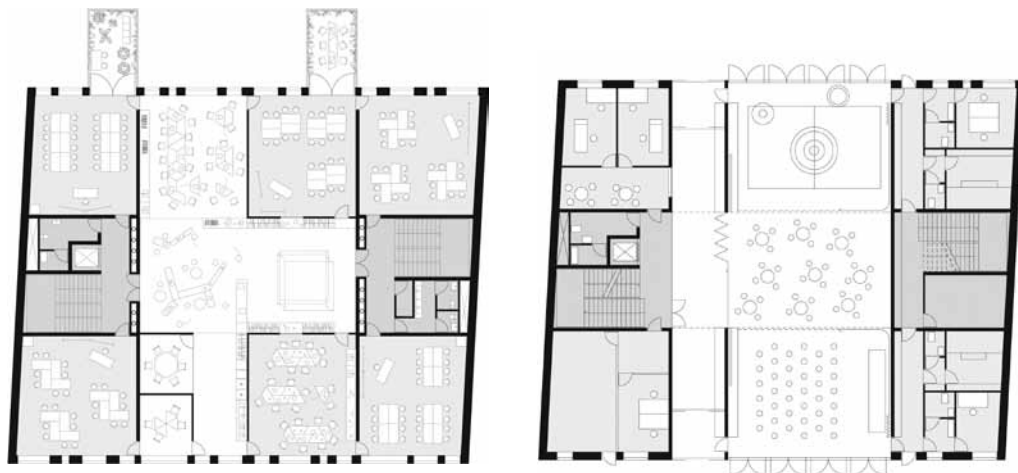
设计时间 2009

规模 37 700 sq.ft (新建), 26 900 sq.ft (重建)

30 JAN, 2010 M.F



总平面



平面布局

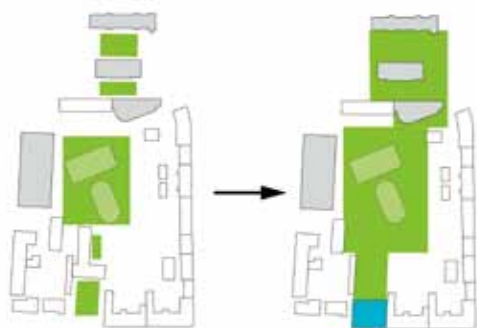
在哥本哈根Frederiksberg的Bülowsvej一所学校的扩建项目中，CEBRA设计了一栋新的独立建筑，作为1~3年级孩子的单独校舍。

多重连接

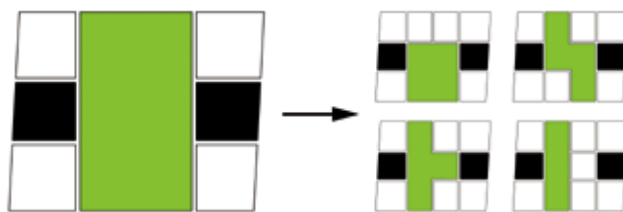
这个项目需要35个同样的50m²大小的房间作为教学和工作间，设计给出了一个很直接的答案。我们取消了传统的学校走廊，将3m×4m×5m的方形房间紧密排列在一个长方形的盒子中，并使房间之间在水平和竖向出现多种连接。所有房间都通过开口、门或内部的窗户与周围的房间连接起来。开口大小不同，尺度从小孔到房间大小都有，创造出一个流动的空间。在垂直方向上，空间连接由传统的楼梯和电梯承担，并在空间中编织成一张网，使人们在不同的楼层之间穿行成为可能。

多变的空间

房间的形状多种多样，在屋顶层形成了一道亮丽的景观，同时在屋顶花园形成一系列方形露台。这些变化既营造出教学环境中需要的空间变化，也使得建筑外观的规模显得较小，如此一来，就在传统小镇街区和城市另一边的别墅之间创建了一个链接。

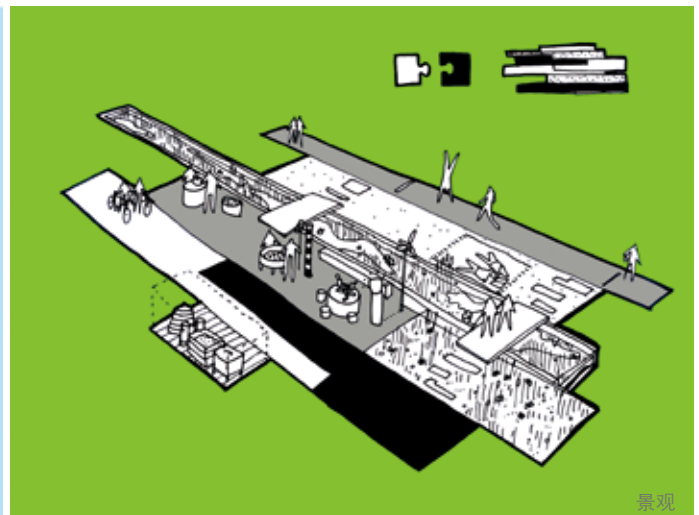
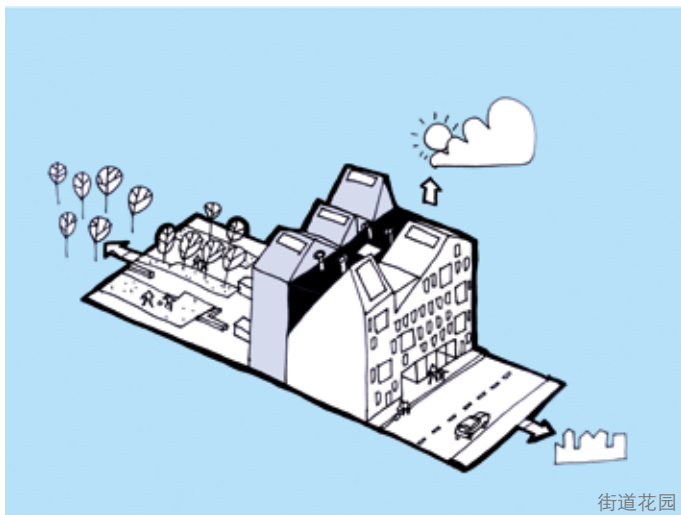
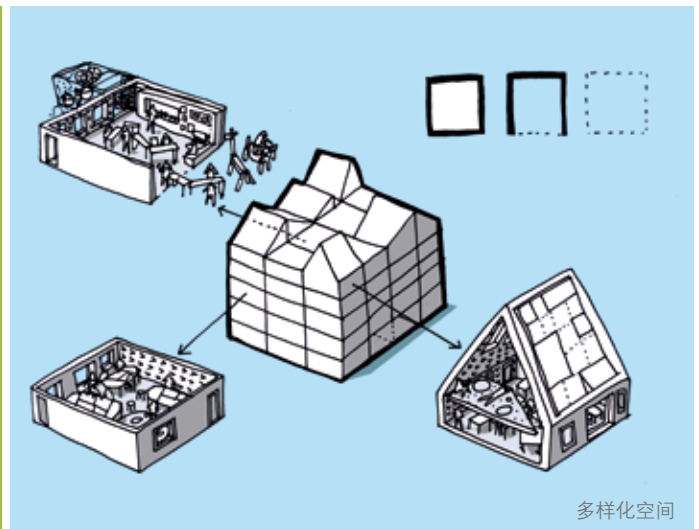
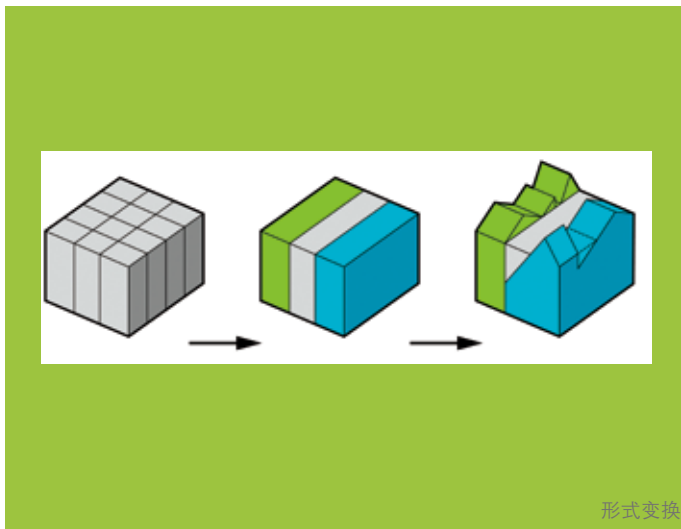


基地演变分析



平面演变分析





三明治的概念

建筑应用了一个三明治的概念来重塑学校与周边城市环境的关系。这栋建筑像三明治一样分为三个不同的部分，一部分正对庭院，一部分正对街道，另一部分将前两者连接起来。这三个部分的划分与建筑内部的三排房间相对应。

建筑于2010年6月起动工，2011年8月完成。然后进行了学校其他部分的重建，以及与景观设计师LIW Planning重新设计校园景观。（译/张岩，校/吴春花）

CEBRA is drawing an extension to the School at Bülowsvej in Frederiksberg, Copenhagen. The extension is a new, solitary building housing kids from 1st to 3rd grade.

Multiple connections

The program asks for a generic program of 35 similar 50 m² rooms for education and workshops and the design is a very direct answer to that. Eliminating traditional school corridors we packed 3 x 4 x 5 square rooms closely together in a rectangular box, allowing multiple connections between the rooms both horizontally and vertically. All rooms are connected to its neighbors by openings, doors or internal windows, varying from small holes to room size openings creating fluid spaces. Vertically the spaces are connected both by traditional stairs and elevators and by tailor made spatial nets, making it possible to climb or jump between levels.

Spatial variation

The shapes of the rooms are varied, forming a vivid "roofscape" at the top floor and a series of box shaped balconies on the garden facade. The variation gives both spatial variation to the learning environment and scales down the exterior of the building - creating a link between traditional town blocks at one side and urban villas on the other.





Sandwich concept

The building reinvents the schools relation to the surrounding city with a sandwich concept in which the building is sliced into three different parts - one facing the yard, one facing the street, and one linking the two. The three slices are corresponding with the three rows of rooms on the inside.

Timeline

Construction is to begin June 2010 and the building should be completed in august 2011. It's followed by a remake of the rest of the school and a redesign of the schoolyard in cooperation with landscape architect LiW Planning. 