



摄影：Poul Ib Henriksen

The A. P. Møller School, Schleswig

AP穆勒学院

客户 The A. P. Møller and Chastine Mc-Kinney Møller Foundation
地点 Schleswig, Germany
建筑设计 Arkitektfirmaet C. F. Møller (C. F. Møller Architects)
项目负责人 Maersk Construction (project and construction management)
工程设计 Rambøll A/S
景观设计 Kessler & Krømer Landschaftsarchitekten
艺术设计 Olafur Eliasson
规模 15 000m²
时间 2006~2008





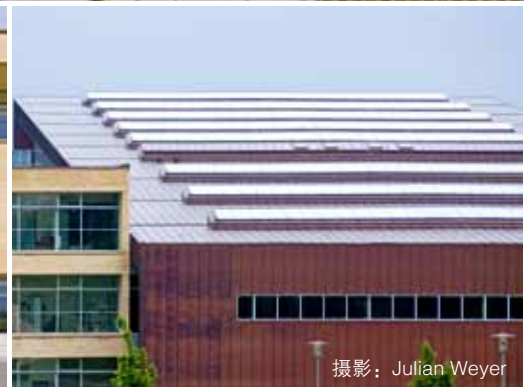
摄影：Poul Ib Henriksen



摄影：Poul Ib Henriksen



摄影：Poul Ib Henriksen



摄影：Julian Weyer

AP穆勒学院是一所位于德国的丹麦学校，包括一个男女同校的校区和一个中学校区。它是由AP穆勒基金会捐赠给Schleswig南部的丹麦学校，这一基金会最为人知的就是投资新建了哥本哈根的丹麦新歌剧院。

此项目选址在Schleswig一块黄金地段上，拥有面向大教堂和Schlei湾的良好视野。这个项目的目标是希望建立这样一所学校，即用一种相对直接的方式来实现梦想和满足需求，既能满足社区的要求，又不忽视个性的发展。这一愿望已经通过一个既开放又密集的学校结构得到了实现，并同时确保学科之间、教师和学生之间合理的自然距离和身心距离。

这所学校的建筑设计非常简单易懂，即矗立在一片开阔草坪上的一座精雕细琢的独立砖块砌体。







剖视图



摄影：Poul Ib Henriksen



摄影：Poul Ib Henriksen



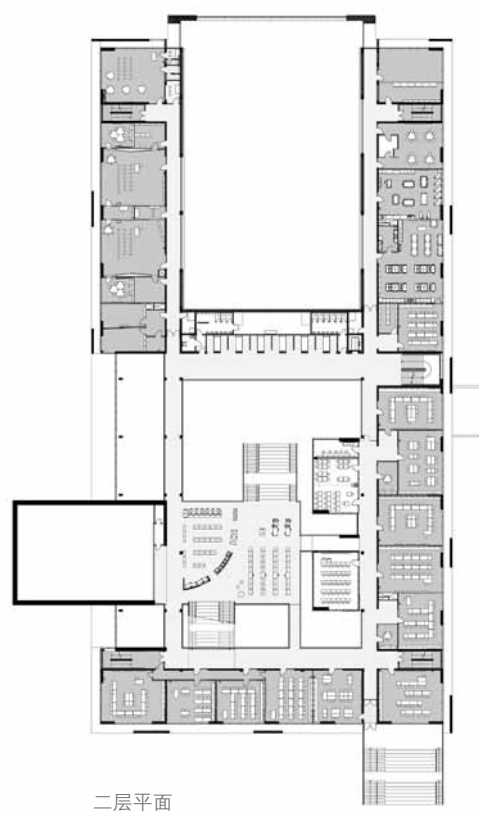
鼓励公平教学的空间

在总体规划中，建筑师们尽力确保教学结构的开放，教学不仅仅发生在教室里，整个校园也可以为个人实践、团队合作和全班讨论的教学场所。学校内部的开放性功能组织为在一个多样化的教育环境中实现先进而公平的教育打下了坚实的基础。通过将传统教室围绕礼堂和常用功能布置，为日常的自由选择教学形式创造了最基本的条件，同时各学科组之间的高度合作，最大程度地使师生受益。

正门和普通用房都经过特别的设计，可以看到当地自然保护区Holmer Noor（Schleswig市区内的一个湖泊）和Schleswig的标志性景点大教堂。慢慢走进校舍建筑，视野中会不断涌入这个小镇和周围自然环境的美丽景色，而站在校舍的高处则可以俯瞰整个Schlei湾的壮丽景致。

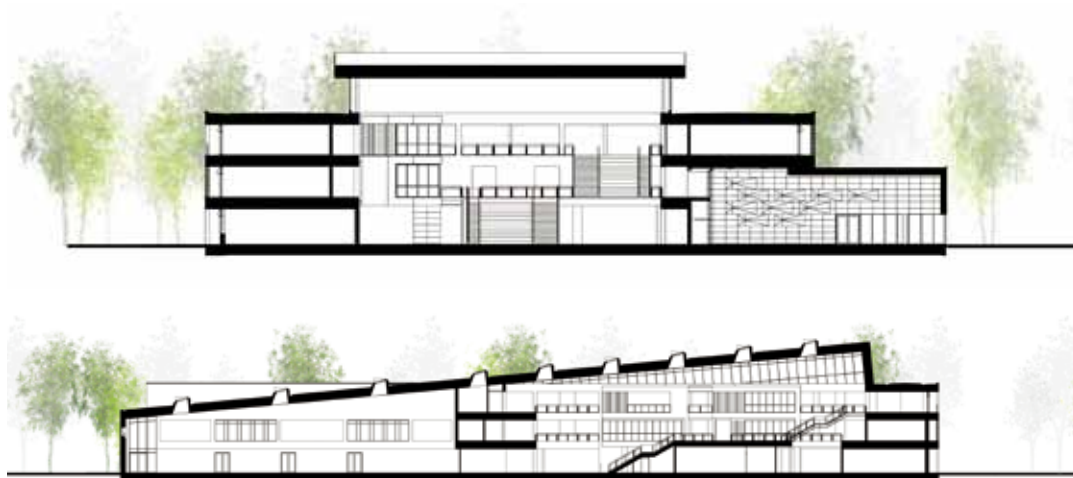
一座砖与铜片砌筑的地标建筑

为了实现作为一个标志性建筑应有的高透明、高密度和高可读性的愿望，平面布局划分为两大主要空间：礼堂以及周围与其关联的食堂、休闲区、活动中心和南部的图书馆，还有体育馆和北部的多功能厅。这些都笼罩在一个一直向上延伸到南部的大屋顶下，勾勒出建筑物的外部轮廓。这两个主要空间之间就是校舍建筑的主





摄影：Poul Ib Henriksen



剖面

入口和主楼梯，提供会议和放松的场地，还放置了奥拉维尔·埃利亚松的题材为太阳系九大行星的轻质雕塑作品“Tellurium”，整个雕塑漂浮于中庭之上，顺着天花板的趋势斜向地运动。

整个设计通过两个简单的元素，巧妙地把雕塑的形式美和完整的功能性结合起来。首先，建筑整体都由砖块砌成，在立面上形成了虚实相映、错落有致的外观效果；其次，大片的倾斜铜屋面将校舍建筑一分为二，展示出建筑的两个主要内部空间的结构和轮廓。铜屋顶采取了一个大气、统一而连贯的形式。（译/张岩，校/吴春花）



摄影：Poul Ib Henriksen



摄影：Poul Ib Henriksen



摄影：Poul Ib Henriksen





摄影：Poul Ib Henriksen

The AP Møller School is a Danish school in Germany. The school, which consists of a co-educational school and a secondary school section, was a gift to the Danish School Association in South Schleswig from the AP Møller Foundation, which is probably best known for its financing of Denmark's new Opera House in Copenhagen. The aim of the project, located on a beautiful site in Schleswig with a view of the cathedral and the Schlei fjord, is to create a school which, in a straightforward manner, unites dreams and demands, community and individuality.

This aspiration has been met with an open and dense school structure that secures short physical and psychological distances between the subjects, the teachers and the students.

The school's architecture is simple and readable, with a clear form and a recognisable profile: a solitary, sculpturally-formed brick body on a wide green lawn.

Spaces which encourage democratic teaching

In the overall planning, efforts have been made to secure an open teaching structure in which not only the classrooms, but also the entire school provides a



摄影：Poul Ib Henriksen



摄影：Poul Ib Henriksen



摄影：Poul Ib Henriksen

teaching environment for individual work, group work and plenary sessions. The school's interior openness and organisation provides a starting-point for modern, democratic teaching in a varied educational environment.

By grouping the traditional classrooms around the assembly hall and the common functions, a simple basis has been created for daily freedom of choice in the form of teaching, as well as a high degree of interdisciplinary co-operation between the various subject groups, to the benefit of both students and teachers.

The main entrance and common room are designed to provide a view of the nature reserve Holmer Noor and the profile of Schleswig, with the cathedral standing out as a fixed point in the landscape. On further movement through the building, new views continuously open up of the town and the natural surroundings, while the upper storeys offer a magnificent prospect of the entire Schlei fjord-landscape.

A landmark in brick and copper

In order to meet the wish for clarity, density and the building's readability as a landmark, the layout is grouped around two large main spaces: the assembly hall, with its associated canteen, relaxation areas, performance hall and knowledge centre in the southern part, and the gymnasium and multi-purpose hall in the northern part. These are spanned by a large unifying roof which rises up to the south, reflecting the building's exterior profile.

Centrally located between these two spaces is the main entrance and main stairway, offering possibilities for sitting and relaxation, and where Olafur Eliasson's light sculpture of the nine planets of the solar system, "Tellurium", floats above, following the slanting movement of the ceiling.

The architectural expression of the school consists of two simple elements which, in their separate ways, combine sculptural form and function. The first of these is the overall brick body of the storeys, which possesses a dynamic expression with perforations and displacements in the facade. The second element is the extensive sloping copper roof surface which bisects the school body, revealing the school's structure and the contours of the two main inner spaces. The copper roof takes the form of an expansive, unifying gesture. 