

Ordos House

鄂尔多斯宅

客户 江源水工程公司

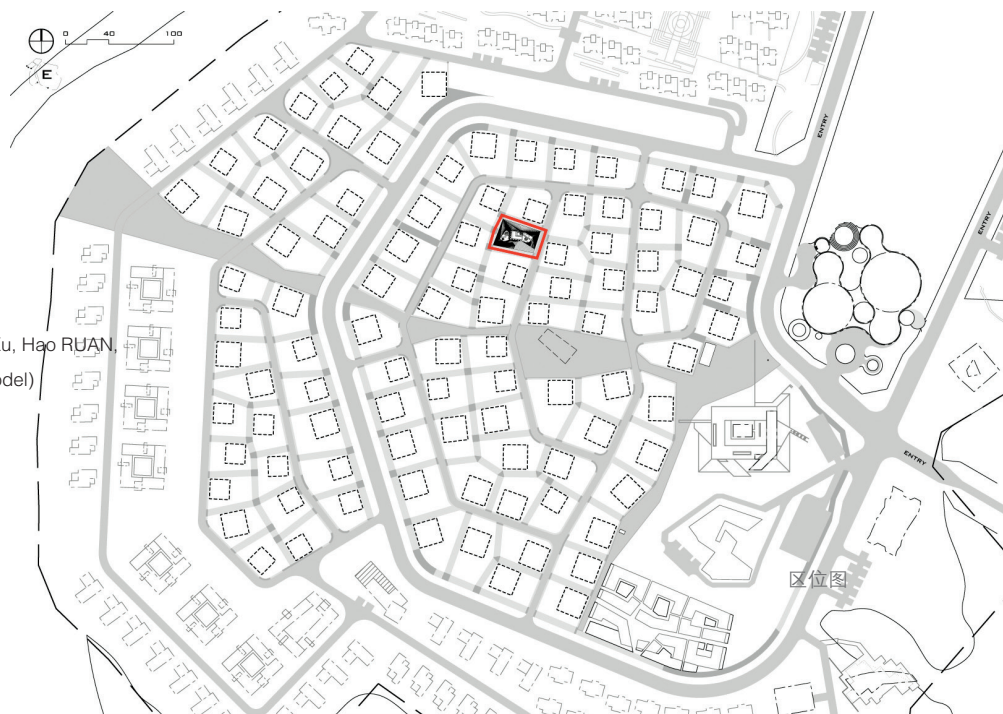
建筑设计 Preston Scott Cohen事务所

设计团队 Preston Scott Cohen (Design), Amit Nemlich, Li Xu, Hao RUAN,
David Shanks (Project Assistants), Yair Keshet (Model)

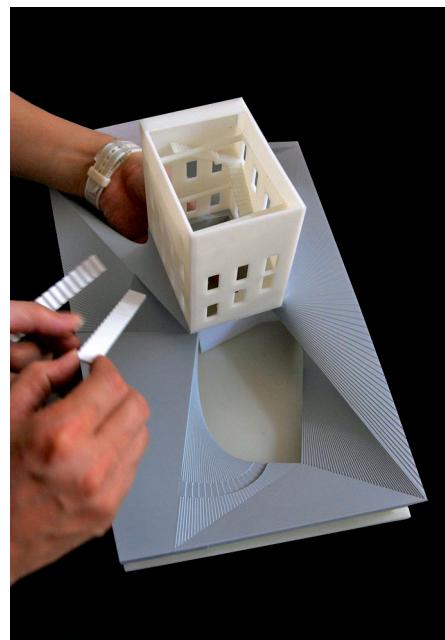
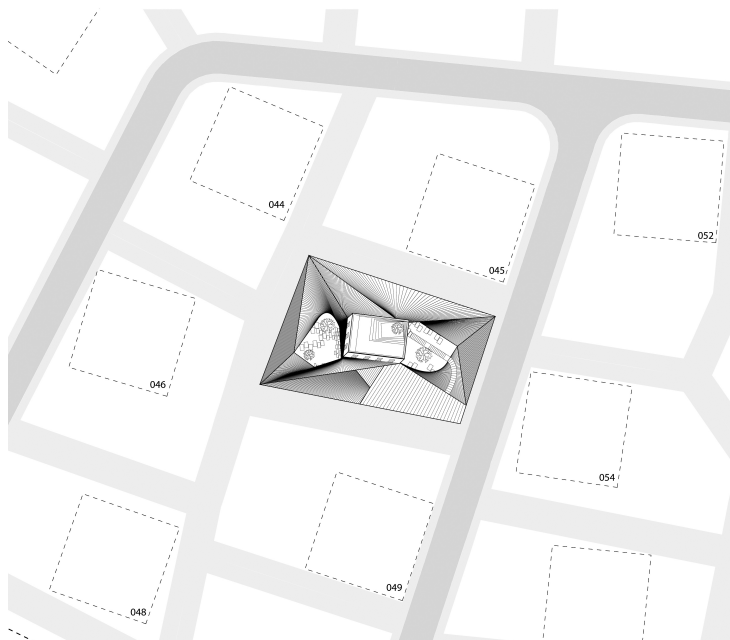
项目周期 2008年 (设计) ; 2009~2010年 (施工)

项目概况 880m²

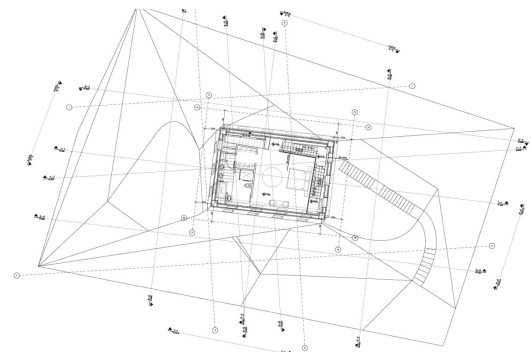
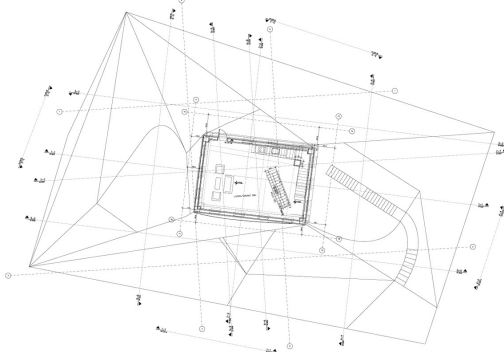
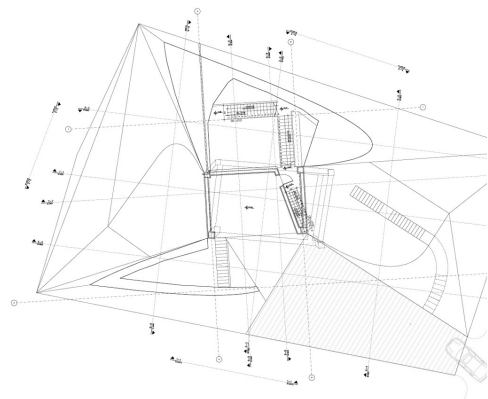
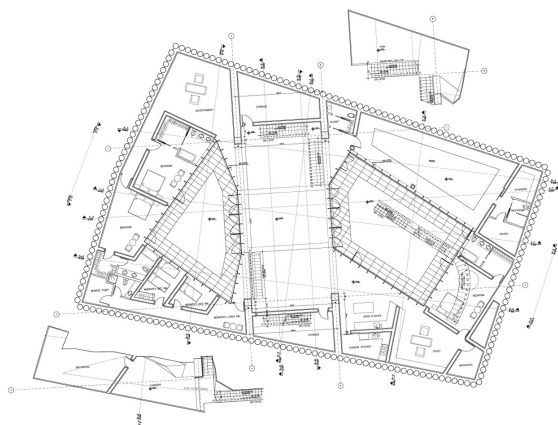
项目顾问 Eric Hines, LeMessurier结构公司

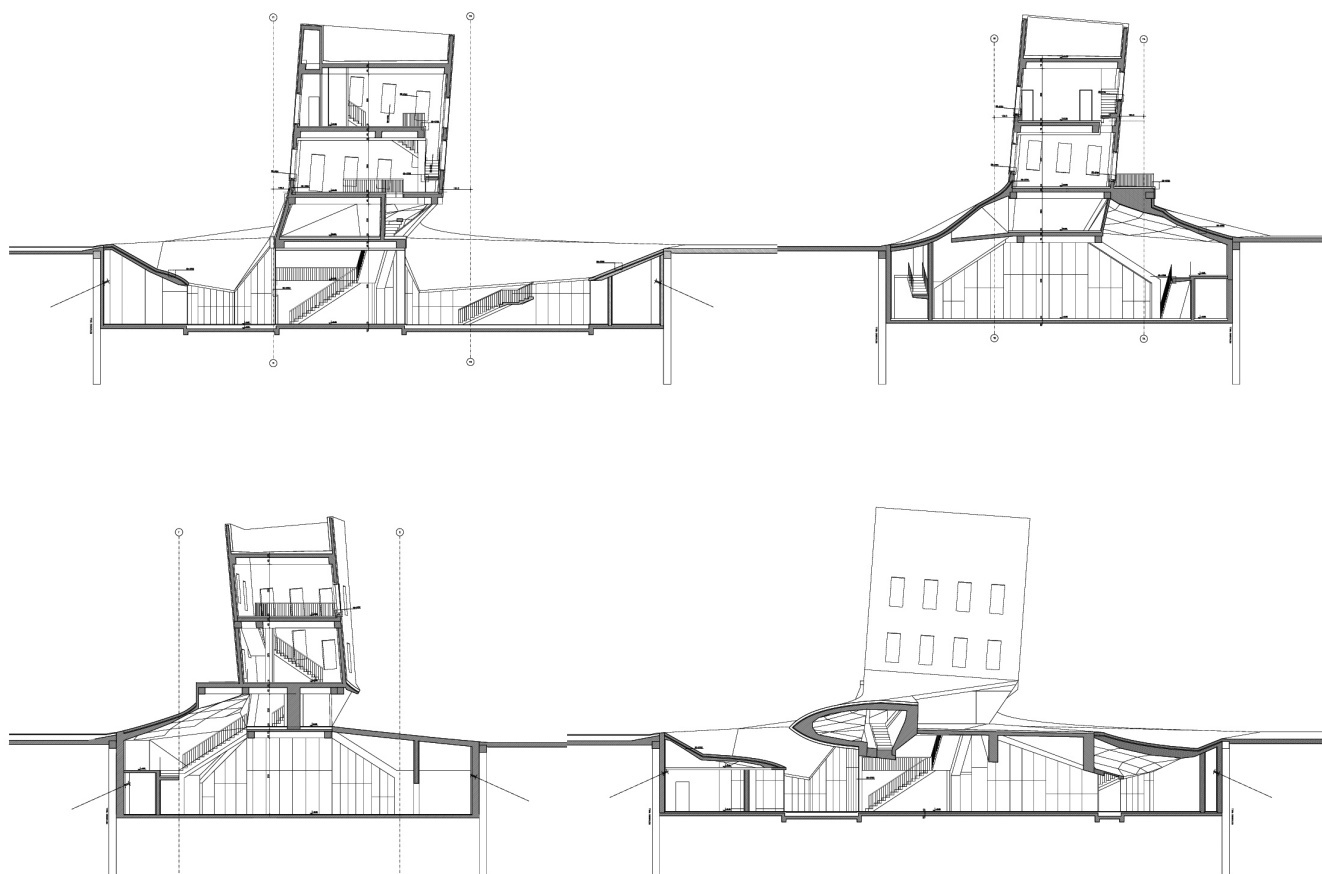
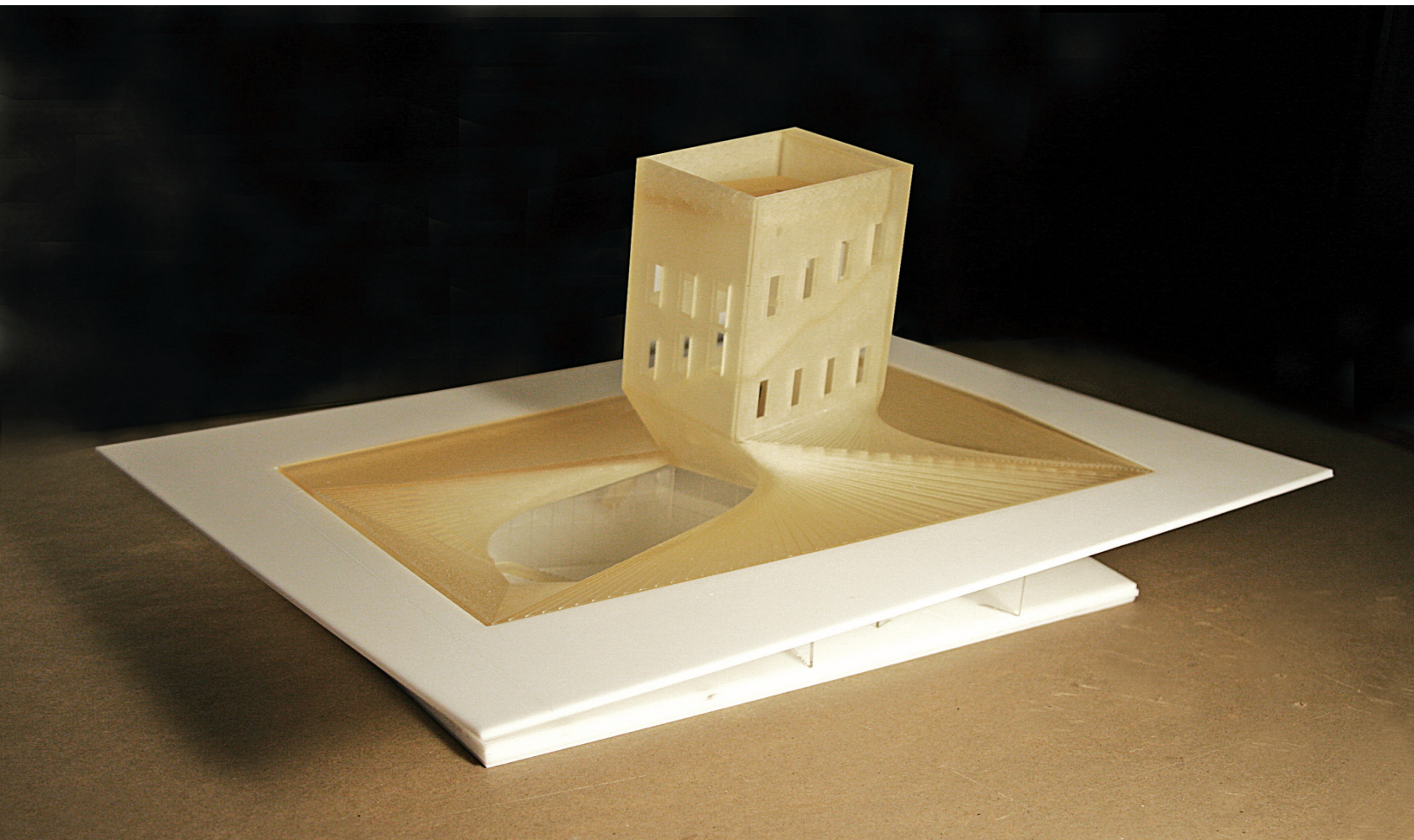


于建筑而言，这座大尺度的当代宅院在均衡性和角色定位上带来了问题：试图将大尺度的住宅化为公共团体角色的小建筑。因而这种宅子的角色会更类似于内部空间为展览而设置的小型展览馆而非仅仅作住处之用。这座宅子在强化这种倾向的同时也发生着迅速的蜕变：它在表现为一个不同寻常的人造物和纪念碑式的建筑的同时，还提供了在角色上出人意料的、和缓的室内居住空间。周边的建筑氛围难以保障文脉上的归属感。因而，这小建筑仿佛一座飘忽不定，无根所系的宅子。上无丰润之气候，下无肥美之沃土，它须得自行谋划经营才能弥补重要建筑文脉的缺失。为了应对鄂尔多斯当地干旱的自然景观条件和恶劣天气，建筑需要创造自身的小环境以便营造内部的绿洲。起初，这座房子传递出的气息是小的、具有浪漫主义色彩的、屋顶杂草丛生的城市建筑。但实际上，这座房子的内容还远远不止这些，在这一景象的下面隐藏着一组围绕着两个院落精心布置的娱乐空间和客房。而两个院落之间是看似凌乱随意但实则联系各栋房子的绿化景观。这座建筑采用了混凝土框架结构和填充结构，外表皮是灰色砖瓦。悬臂式的钢筋混凝土底座由两个大的拱形的钢筋混凝土结构来支撑。（译 / 朱晓琳）

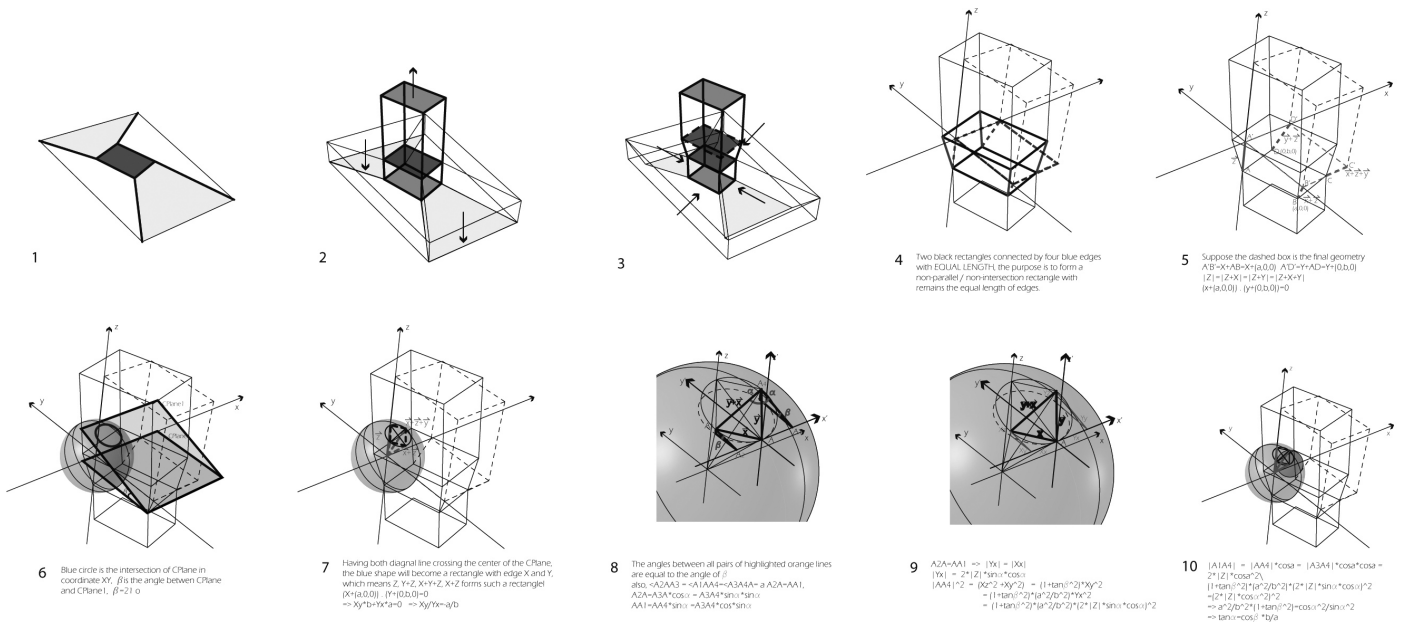
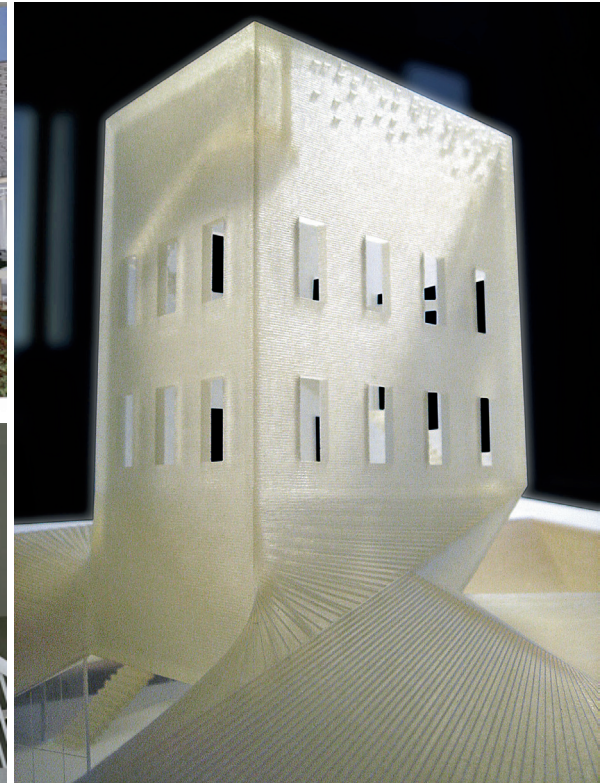
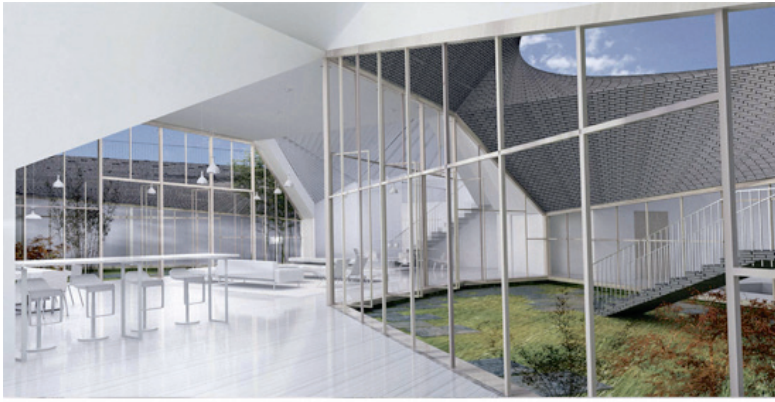


总平面





剖面



For architecture, the large contemporary house poses a problem of proportionality and character. Big houses tend to become little buildings that possess an institutional character. Too often, they are comparable to small museums with interiors more suitable for exhibition than for dwelling. This house at once concedes to and intensifies this tendency while proposing an alternative; it appears to be an unusually miniature, monumental building while providing interior spaces that are unexpectedly domestic in character. The surrounding neighborhood of houses does not allow a contextual sense of belonging. Thus, the miniature building acts like a buoy - anchored and adrift - without the usual moorings of a house.

In lieu of a significant architectural context, surrounded by an arid landscape and subject to severe weather conditions, the Ordos house needs to establish its own setting in order to provide an oasis within it. Initially, the house appears to be a small, romantic and ruinous urban building with an overgrown roof garden. In fact, this is the least of it. Below this is a large, rambling entertainment and guest villa, organized around two courtyards. Between the two is a tumultuous landscape-like form that unmoors the small building and ostensibly causes it to lean. The house is a rough, poured-in-place concrete frame and infill structure clad in gray brick and tile. The tower cantilevers from a reinforced concrete base frame that is supported by two large reinforced concrete structural arches. **AT**