

Goodman Residence

古德曼住宅

客户 Arnold Goodman, Elise Goodman

项目类型 私人住宅/建筑改造

项目周期 2001-2002 (设计) · 2003-2004 (施工)

项目概况 420m², 荷兰谷仓式结构 (起居室、餐室、厨房三合一空间, 花廊, 温室, 4间卧室, 3个洗手间)

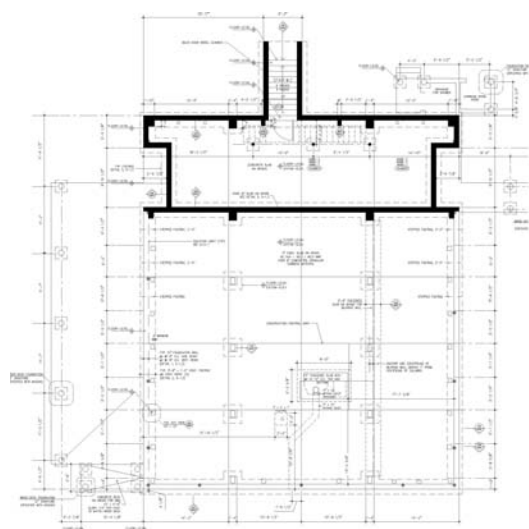
建筑设计 Preston Scott Cohen事务所

设计团队 Preston Scott Cohen (Design), Phil Wu, Kay Vorderwuelbecke, Wynne Mun, Aaron D¹ Innocenzo (Project Assistant)

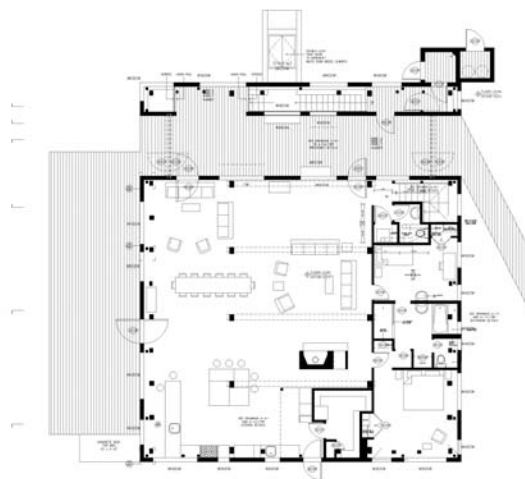
顾问 Jack Sobon (荷兰式谷仓专家), Don Montgomery, Bill Bishop (结构工程顾问), Daina Yurkus (照明顾问), Victoria Sambunaris (摄像师)



古德曼住宅在当代建筑设计中以其惊人的体量独树一帜，大胆承袭了经罗伯特文丘里重新诠释的源自麦金以及赖特的低层住宅样式，并延伸了对于现代硬山坡顶住宅的理解。重新架设起来的荷兰式谷仓结构宛若一只巨大的吉他，平顺自如地盛放在恰到好处的室内空间里。由于客户对于传统空间样式的偏好，木架构与大型贯通空间之间没有依照谷仓结构的惯例用挑台进行结构联结和加固，而是使用了铁制梁架来箍紧整个谷仓结构，并用点缀了大小各异窗洞的幕墙对铁梁进行包裹掩饰。在整个建筑中，大空间与小隔间产生互动，大小不同的窗洞错落有致，崭新锃亮与锈迹斑斑的结构构建交相辉映，创造了一个丰富而舒适的居家休闲空间，同时也展示出一种新的民居艺术。

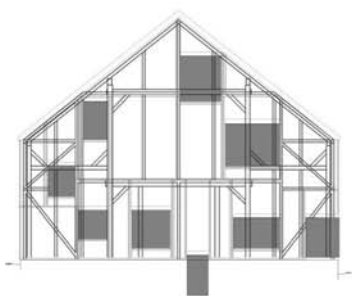


Lower Level

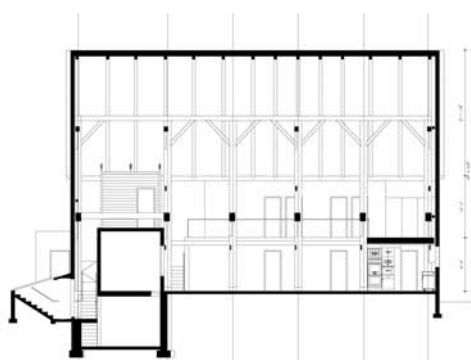


Ground Level

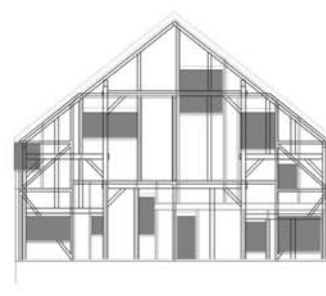




North Side



Section Looking East



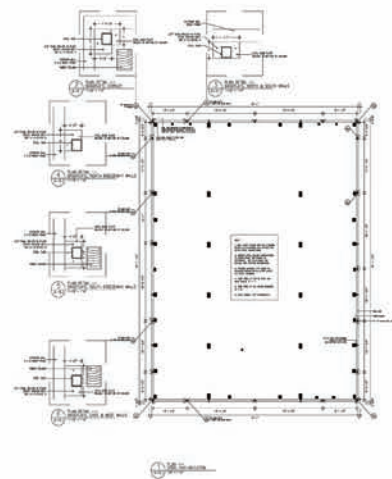
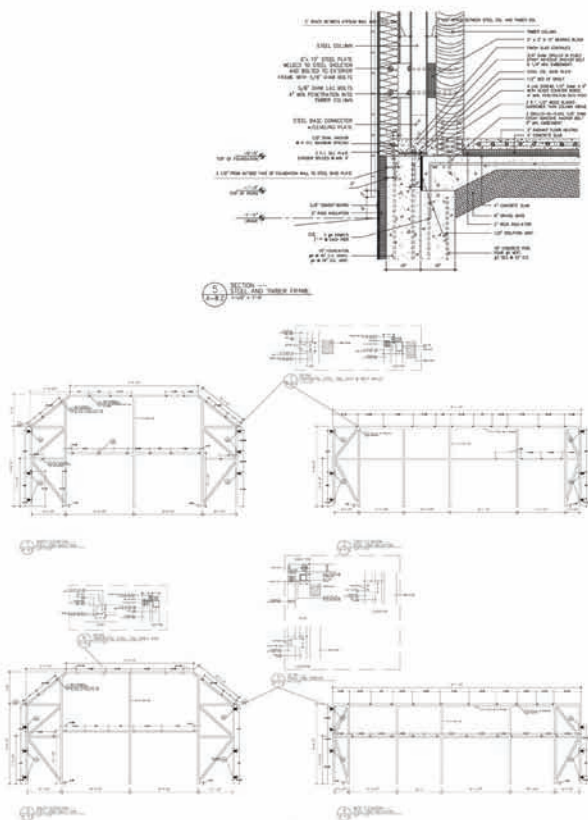
South Side

立面及剖面图

With its monumental scale, the Goodman House extends the Modern legacy of radical gable form houses - a legacy which began with McKim Mead and White's Low House as reinterpreted by Robert Venturi, and continues today in the work of numerous contemporary architects. A transported and re-erected Dutch barn frame is contained in this house like a guitar in its case. The house appears to turn outside in due to a passageway traversing the width of the whole interior space. Thermally transformable, the breezeway converts into a winter garden by means of slide up screen doors and roll down glass doors. The clients' affection for the antiquated timbers combined with their desire for an excessively lit and predominantly undivided interior did not allow for the reintroduction of the mezzanines and partitions that typically stabilize barn structures from within. Therefore, lateral structural stability has been reintroduced by a steel frame surrounding the barn. A curtain wall, with irregularly distributed windows,



PRESTON SCOTT COHEN, INC.



施工现场及细部设计



wraps the peripheral steel frame. It is as if nostalgia caused the emergence of a Modernist paradigm of construction more fitting to a commercial building than to a house. The relationship between compartmental and open spaces, small and large windows, refined and rustic structural components creates a rich and variable environment for living, entertainment, and exhibition of folk art.^{AT}