

# Wuzhen Theater

## 乌镇大剧院



剧院宛如乌镇中盛开于水面上的一盏并蒂莲……

### 大剧院

本案位于江南水乡梦境似的古镇——乌镇。乌镇管理者将乌镇定为国际重要戏剧节的活动据点，并将乌镇大剧院的设计委托给了姚仁喜建筑师及其团队。

设计的最大挑战在于剧院的两个剧场：1 200 席的主剧院及 600 座的多功能剧场，背对背，满足现代剧场功能却又不突兀地融入这片古典精巧的水乡。设计应用代表吉兆的“并蒂莲”的隐喻，将这个寓意祥瑞蓬勃的形象转化为一实一虚的两个椭圆体量，分别配置以两座剧场，重迭并蒂的部分则为舞台区，舞台可依需求合并或单独利用，以创造多样的表演形式。

**客户** 乌镇旅游开发有限公司

**建筑师** 姚仁喜

**建筑设计** 大元联合建筑师事务所（台北）  
会元设计咨询（上海）有限公司

**台北设计团队** 沈国健、王馨慧、刘文礼、孙建钧、张建翔、林佳宪

**上海设计团队** 朱文弘、应斐君、郑乃文、许祥译、巫奇升、姜妮、冯磊

**执行建筑师** 上海建筑设计研究院有限公司

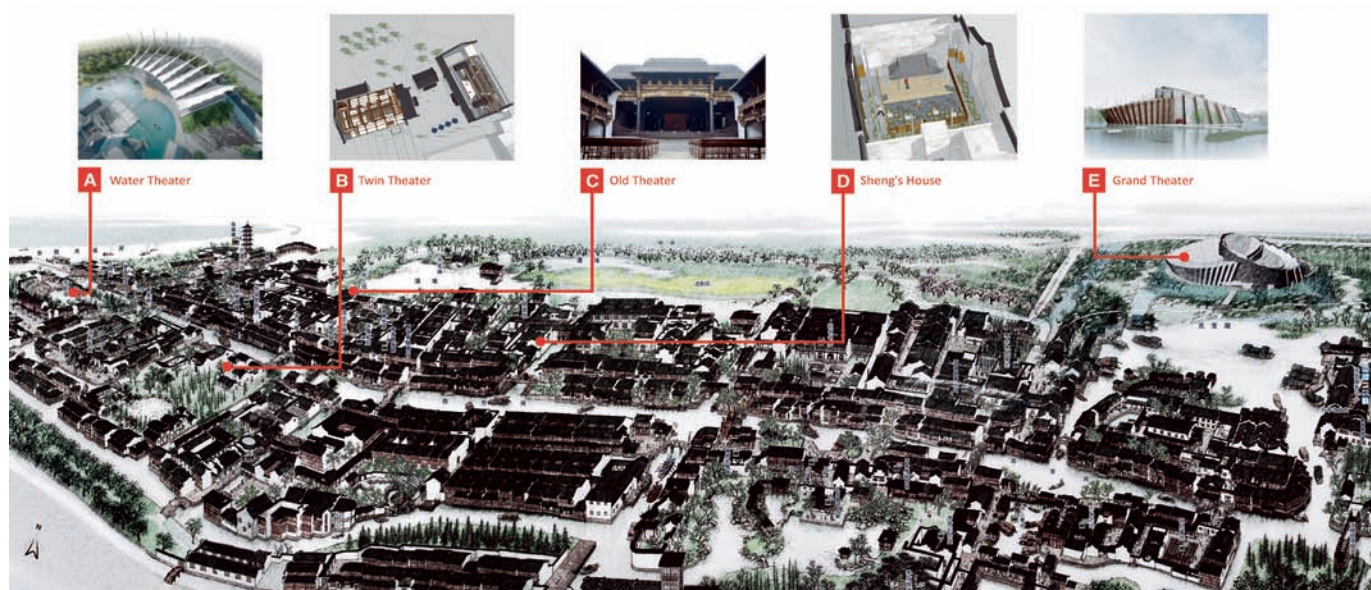
**剧场顾问** 伦敦Theatre Projects Consultants Ltd

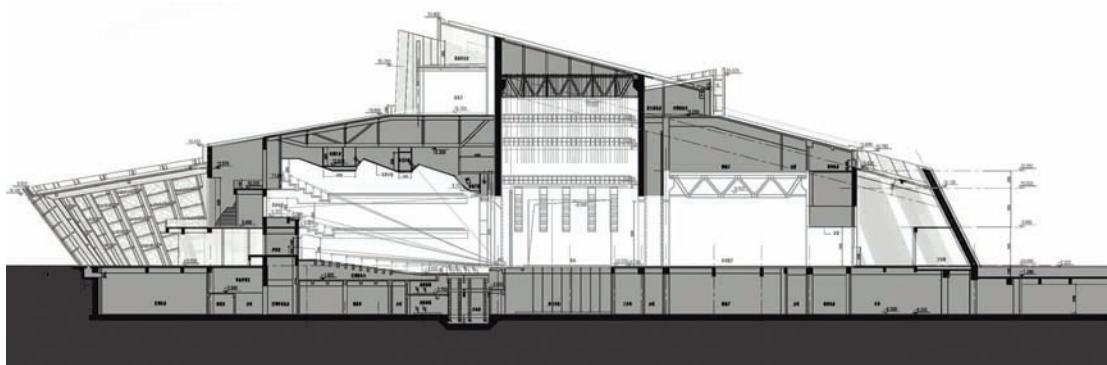
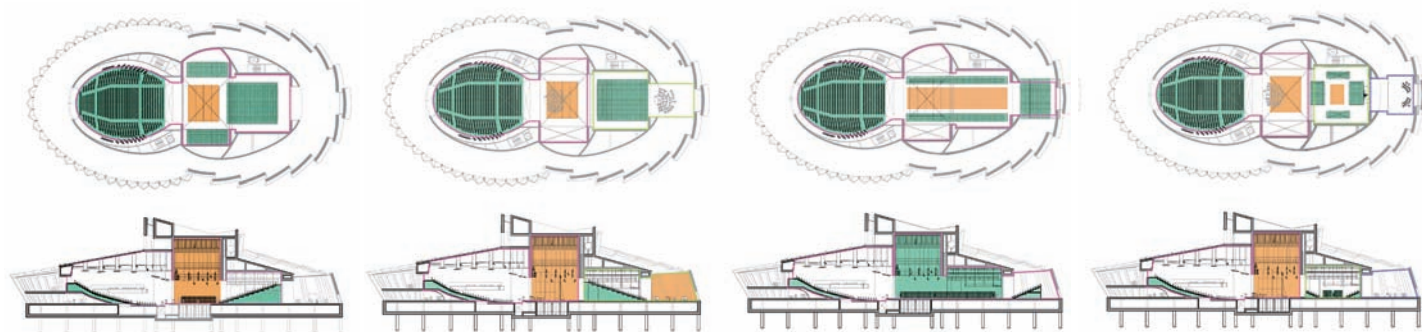
**外墙顾问** 台北马可卢设计技术有限公司

**声学顾问** 香港声美华有限公司

**室内设计顾问** 台北元崇设计工程有限公司

**施工厂商** 巨匠建设集团有限公司





由于兼具戏剧节表演与观光的双重功能，剧院将满足不同形式的使用需求，提供包括传统戏曲、前卫表演艺术、时尚舞台秀、婚宴喜庆等活动的空间。

访客搭乘乌篷船或经由栈桥步行到达剧院。多功能剧场位于建筑右侧，一片砌上京砖的斜墙，宛如花瓣层叠，包围出剧场的前厅空间；西侧的大剧院则以清透光亮的体量展现对比，折屏式的玻璃帷幕外侧披覆一圈传统样式窗花，夜晚泛出的幽幽光影反射在水面上，为如梦似幻的水乡增添另一番风情。

### 古戏台

在一个古典的庭院中，利用轻量的木结构融入既有的庭院中及翻新的观众席中来适应现代表演的剧场模式。新的舞台是个双面舞台，观众可由剧院内的观众席欣赏表演抑或乘船于水面上欣赏表演。

### 水剧场

在现有的水剧场户外表演广场中加入新的设计，观众乘船抵达这优美浪漫的剧景。帆船般的结构提供了座位席遮阳，舞台则可灵活提供各种不同的表演配置。

#### 项目信息

**结构形式：**钢筋混凝土、钢骨

**建筑材料：**青砖、玻璃幕墙、实木格栅

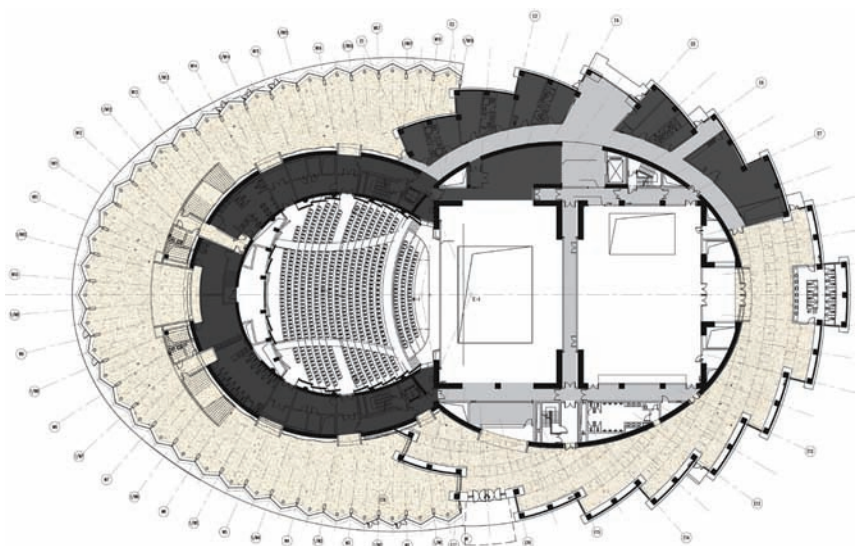
**基地面积：**54 980m<sup>2</sup>

**建筑面积：**6 920m<sup>2</sup>

**总楼地板面积：**约21 750m<sup>2</sup>

**设计时间：**2010.05~2010.12

**施工时间：**2011.01 ~ 至今（预计2012年完成）







Like a twin lotus, the theatres rise from the water in this dream-like town.....

#### **Grand Theater**

In this romantic and surreal water village in China, the owner of the development decided that Wuzhen would be an important name in the global atlas of theater where an international theater festival would be located. In order to complete his vision, Kris Yao and his team was asked to design the Wuzhen Grand Theater.

The greatest challenge was to design a large building containing two theaters with 1 200 and 600 seats back to back, with modern theater functions in this small, traditional water village in southern China. Using the culturally auspicious "twin lotus" as its metaphor, which functions perfectly with two theatres sharing one stage area, the design is composed of two oval





shapes interlocking one another, one of them transparent and the opaque in form.

Due to its dual purposes of the theater festival and tourism, the functions of the theaters are multifold. Possibilities include formal stage performances, avant-garde creations, fashion shows, conventions and wedding ceremonies.

Visitors arrive at the theaters by wooden boats or on foot from an island across the bridge. The smaller theater to the right is located within the "solid" volume, where pedal-like segments of thick reclining walls, clad in ancient super-sized brick, wrap around the foyer. The grand theater to the left, enclosed in the zigzag fan-shaped glass front with a Chinese window motif, glows in the evenings and reflects on the water, adding charm to the already misty and surreal atmosphere of this otherworldly water village.

#### **Old Theater**

A classic courtyard theater retrofitted to adapt for modern performances, by adding a light weight timber structure into the existing courtyard and renovate the parterre section. The stage is restructured to be a two-way stage: the audience can either enjoy the performance from the auditorium or from the boat on the opposite side.

#### **Water Theater**

An existing water amphitheater redesigned, where the audience arrives to by boat to this magnificent romantic setting. Sail-like tent structure provides sun-shading for the seating area; and the stage can be flexibly arranged to fit various configurations. 