



Wexford Opera House, Ireland

威克斯福德歌剧院，爱尔兰



客户 威克斯福德节庆剧院

建筑设计 Keith Williams architects

设计时间 2005~2008

摄影 Ros Kavanagh



对于爱尔兰来说，威克斯福德歌剧节是一项重要的文化活动，就像格林德伯恩艺术节之于英国一样。因此，由 Keith Williams 建筑事务所和爱尔兰政府（公共工程建筑办公室）合作完成的占地 7 235m² 的新歌剧院从建成后至今一直是爱尔兰最重要的艺术项目。新剧院建在这个中世纪渔港小镇的核心地带，即在原剧场旧址上兴建。它包括新的主歌剧院（780 座）、舞台塔、后台以及可变化的二级空间（175 座），同时兼有排练厅、影音制作室、酒吧、咖啡厅和大厅空间。

走近来看，新建筑融入了位于复原的梯形露台建筑背后的威克斯福德中世纪城市中心的历史环境，因此保留了老皇家剧院所具有的令人惊艳和神秘的元素。站在 Slaney 河岸上观看，会愈加发现新剧院展示出的对于城市轮廓线的贡献：新的舞台塔、威克斯福德两座普金风格的教堂尖顶和 Franciscan 意大利风格塔共同营造出了这座城市的天际线，这宣告了在历史悠久的城市风景中一个崭新的文化建筑的诞生。

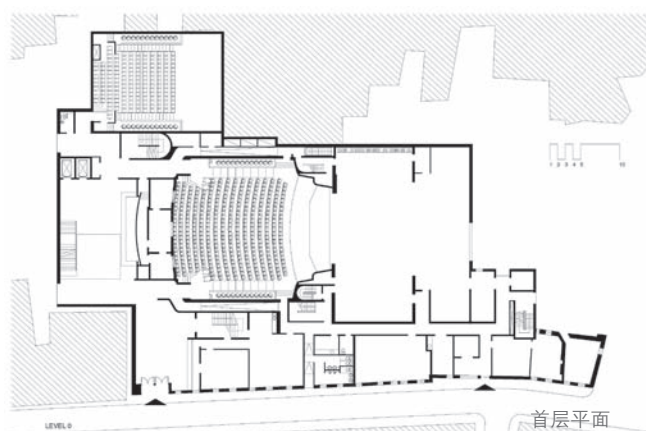
主观演厅的内部设计灵感来自于大提琴的形状和传统马蹄形剧院空间的曲线，墙面全部以成排的美国黑色胡桃木竖条装饰，座位裹着淡紫色的皮革，这一切使剧院的现代设计充满了丰富的材料质感。

歌剧院最初是为秋季的歌剧节而建，但是这座新建筑旨在成为一个针对威克斯福德歌剧节和各来访剧团的全年候歌剧演艺场所。

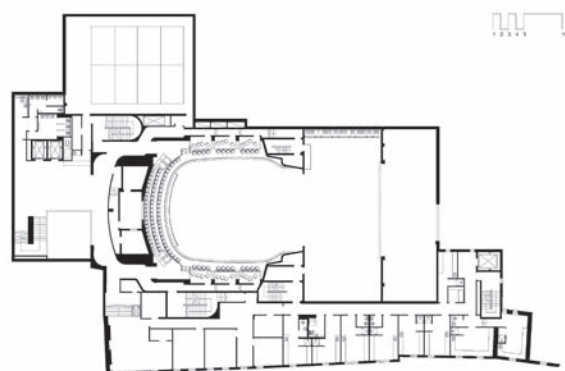
2008 年 9 月 5 日，爱尔兰时任总理 Brian Cowen 先生正式宣布了这座获奖建筑的正式开放。2008 年 10 月 6 日新剧院举行了首场歌剧演出，剧目是里姆斯基 - 柯萨科夫的 Snegourchka（雪女郎）。（译 / 方朔，校 / 吴春花）



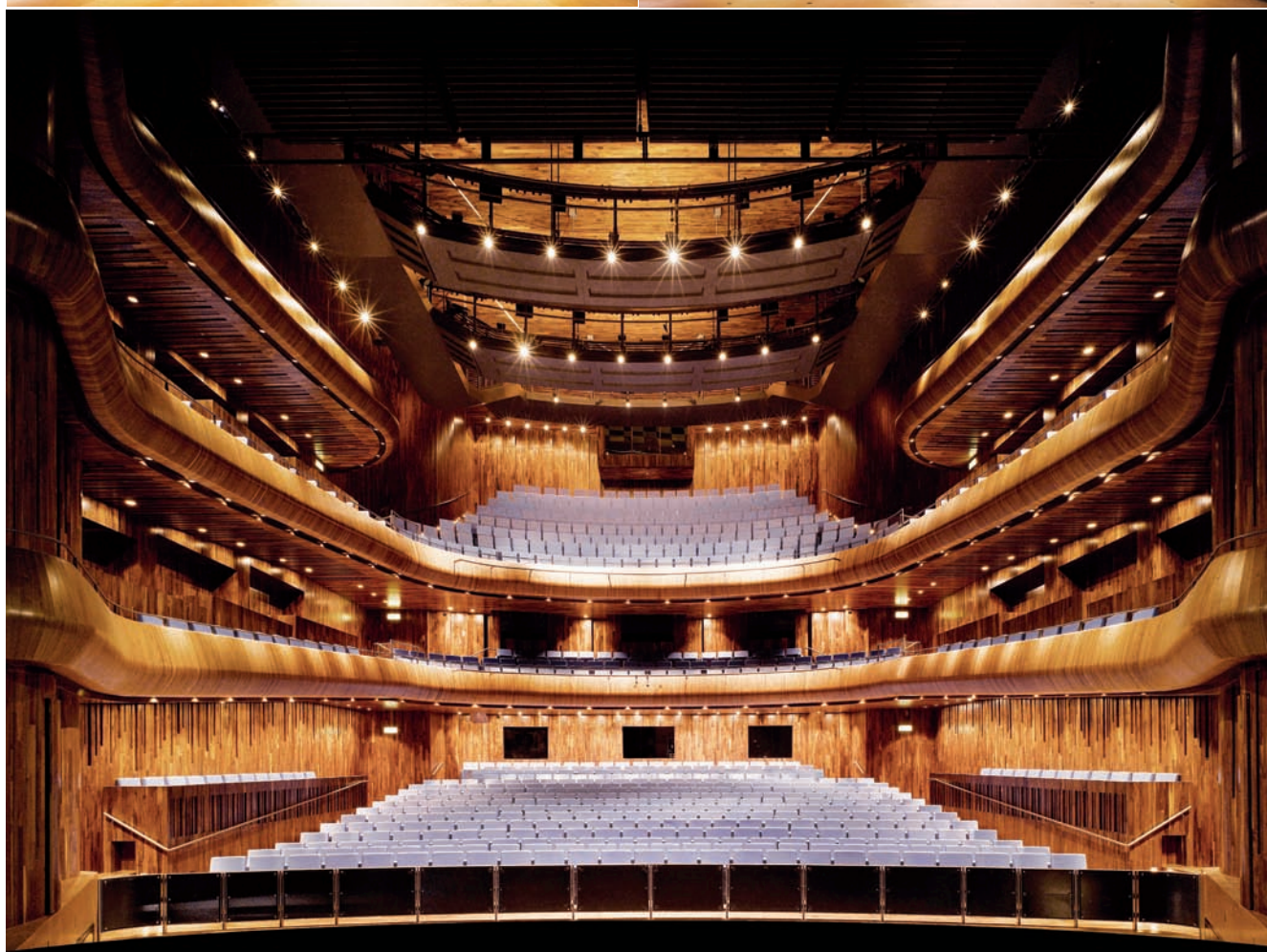


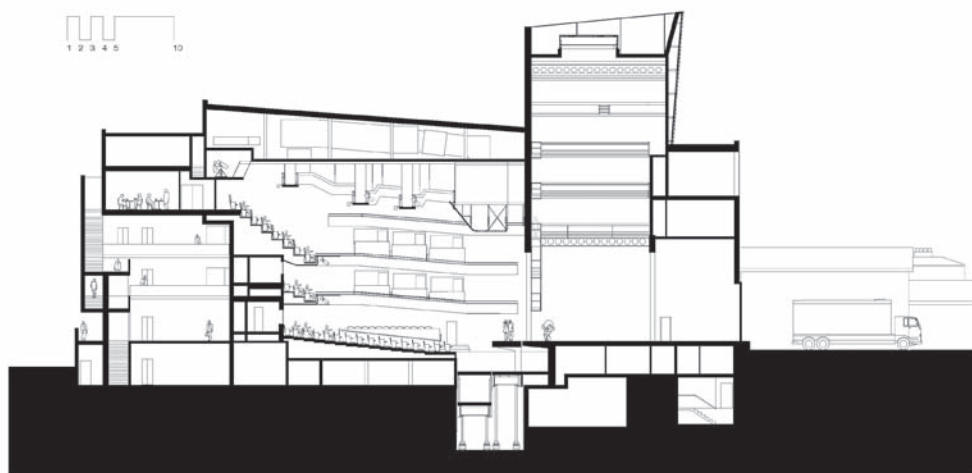


首层平面



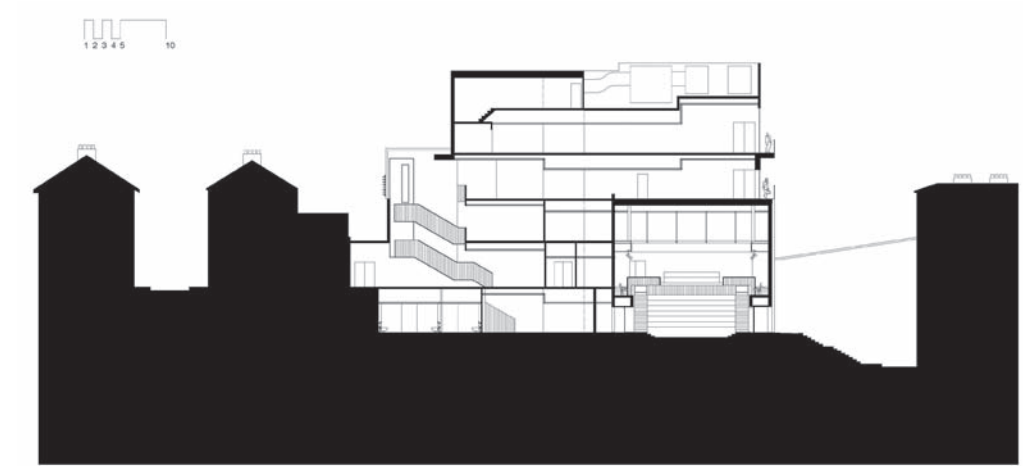
二层平面





A-A剖面





H-H剖面



Wexford Opera Festival is as important culturally to Ireland as the Glyndebourne Festival is to England, consequently the building of the new 7,235sqm Festival Opera House by Keith Williams Architects and the Irish Government's (Office of Public Works architects department) was Ireland's most important arts project for many years. The new opera house has been constructed in the heart of the medieval maritime town, on the site of the Festival's former theatre. It contains the new main opera house (780 seats) completely lined in North American black walnut, full flytower and backstage and a transformable second space of 175 seats, together with rehearsal, production facilities, bars, café and foyer spaces.

Close up, the new building has retained the extraordinary element of surprise and secrecy so characteristic of the old Theatre Royal, by re-integrating itself into the historic fabric of Wexford's medieval centre, behind reinstated terraced buildings. The scale of the building and its contribution to Wexford's silhouette only becomes truly apparent when the project is viewed from the banks of the River Slaney. From there the new flytower appears in the skyline alongside the spires of Wexford's two Pugin inspired churches and the Italianate tower of the Franciscan Friary, announcing the presence of an exceptional new cultural building in the historic townscape.

Internally the main auditorium, inspired both by the form of a cello and the curves of a traditional horseshoe-form operatic space, has been lined in black American walnut whilst the seating has been finished in pale purple leather giving a rich sense of material quality to its contemporary design.

Though primarily conceived for the autumn opera festival, the new building is intended to operate as a year round arts venue, for both additional Wexford Festival productions and visiting companies.

The award winning building was officially opened by Mr Brian Cowen TD An Taoiseach (Irish Prime Minister) on 5 September 2008, whilst the first opera took place in the new house on 16 October 2008 with a performance of Rimsky-Korsakoff's Snegourchka (the Snow Maiden). 