

# Amphion Theatre, Doetinchem, The Netherlands

安菲西恩剧场，杜廷赫姆，荷兰



**客户** Cultural Centre Theatre Amphion SA, Doetinchem

**建筑设计** Mecanoo architecten

**结构工程** ABT bv, Delft

**项目管理及工程概预算** BBN Consultants, Houten

**建筑物理、声学及消防咨询顾问** LBP SIGHT, Nieuwegein

**剧场技术顾问** Theateradvies bv, Amsterdam

**建筑机电** Royal Haskoning, Rotterdam

**承包商** Aan de Stegge Bouw & Werktuigbouw, Goor

**建筑成本（含设备）** € 23 130 000

**建筑面积** 9 700 m<sup>2</sup>

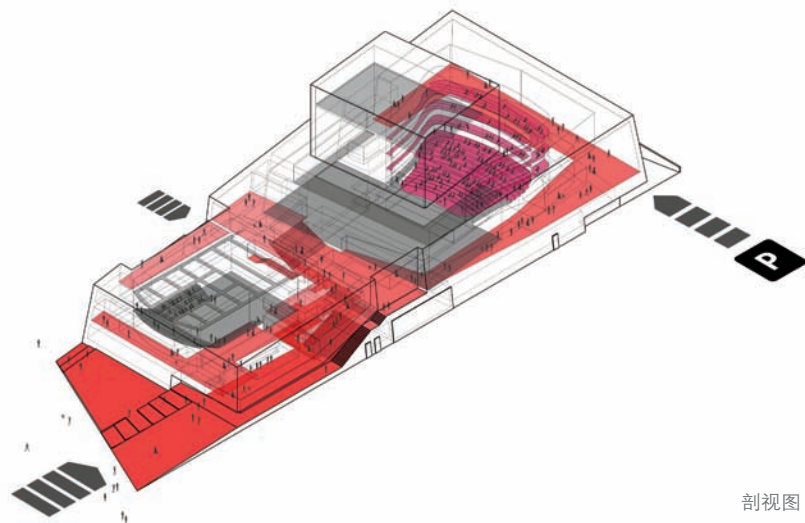
**设计时间** 2006~2008

**施工时间** 2008~2010

**摄影** Christian Richters



摄影：Christian Richters



剖视图

### 红地毯

旧安菲西恩剧场建于 20 世纪 70 年代，如今功成身退，新剧场由 Mecanoo 建筑事务所设计。剧场立面稍加倾斜，牢牢固定在杜廷赫姆的土地上。沙色的砌体立面上点缀着零星散布的一些方形窗户。观众经过庭院进入剧场，这里庭院就起到了红地毯的作用。红色的凹入长廊标明了剧场的入口、咖啡厅和演员休息室的位置。一旦进入剧场，观众就仿佛进入了一个充满温暖红色调的世界。走过一段豪华的楼梯就能到达剧场咖啡厅，这里是剧场的中央聚会场所，可通达四个大厅及一大一小两个演艺厅。精雕细琢的酒吧如同镶嵌在这个双层高空间里的一颗宝石。外立面的窗户布置手法创造了令人惊叹的构图，通过光线赋予每个空间以各自的特点。窗户像是俯瞰全城景色的一幅幅图画框，深凹的窗台也能供人闲坐。

### 百宝箱剧场

860 座的观演厅如同隐藏在建筑物内的百宝箱。只有外部的舞台塔才昭示了观演厅的存在。平易近人的马蹄形空间涂刷了深浅各异的红色调，让人回想起了昔日的老剧场。三个方位的楼座围绕着剧场，使观众更加靠近舞台。舞台地面长 36m，宽 19m，适合于所有大型舞台演出，观众无论在哪个座位都能获得完美的观赏角度。

300 座的小厅可用作放映的黑匣子，它和旧安菲西恩剧场最受欢迎的小演出厅几乎一模一样。可移动的 U 形看台可以确保演员和观众之间的直接接触。通过移动看台，场地可转变为音乐厅或舞厅。



摄影：Christian Richters



摄影：Christian Richters





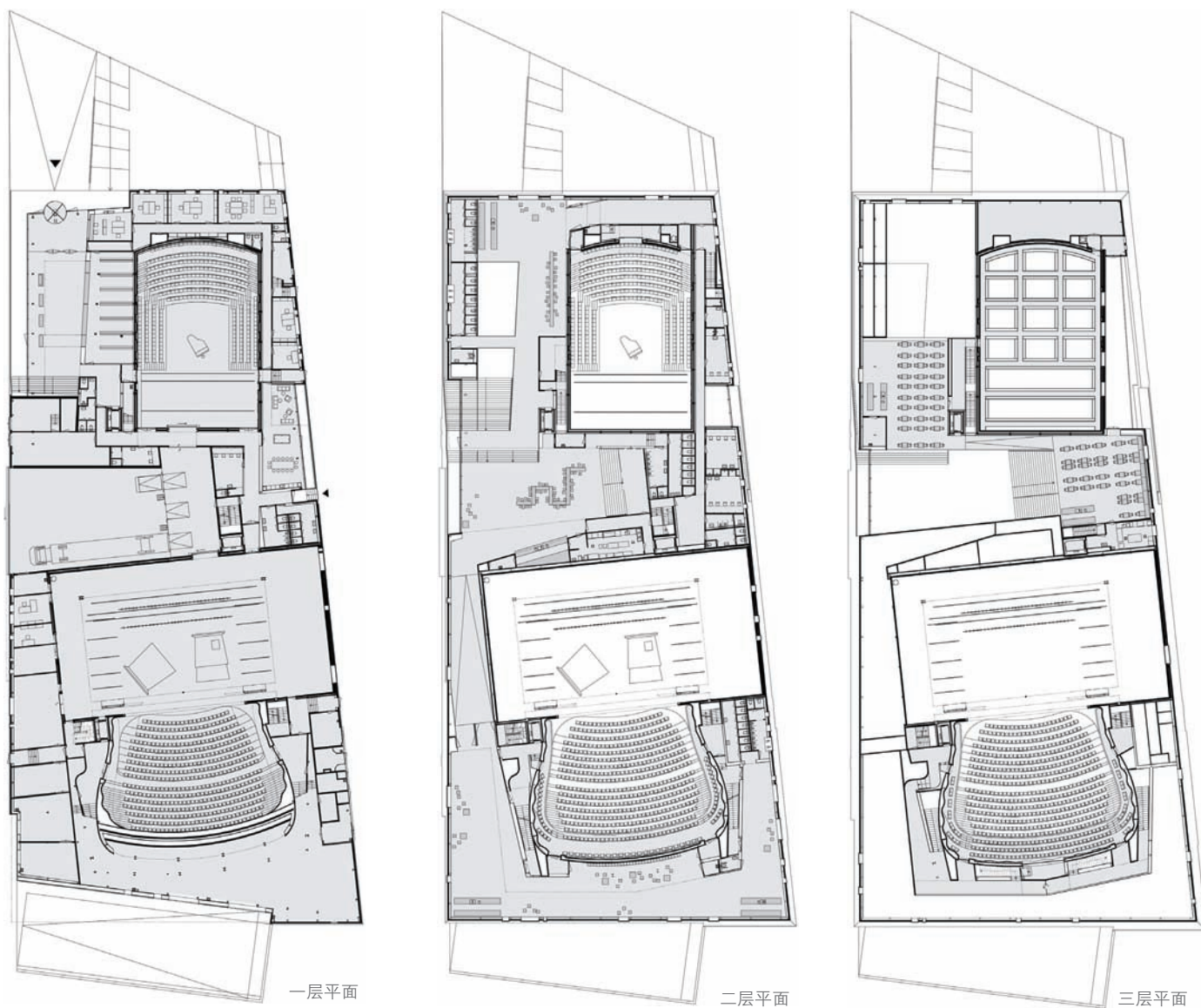
摄影: Christian Richters



摄影: Christian Richters



摄影: Christian Richters



### 工作场所的光照

在安菲西恩剧场，演出换场的节奏十分紧凑，为此必须保证较高的装卸效率。Mecanoo 事务所设计了一个可供三辆 18m 长的卡车停靠装货和卸货的区域，在位于同一层高的两个演艺厅的舞台中央。这个空间也可充当大小演艺厅之间临时存放或转换舞台布景的场所。主厅配备有 29m 高的全自动舞台塔。此外大、小演艺厅都设有一些窗口，以便让技术人员白天在工作场所也能充分享受到自然光。（译 / 方翔，校 / 吴春花）

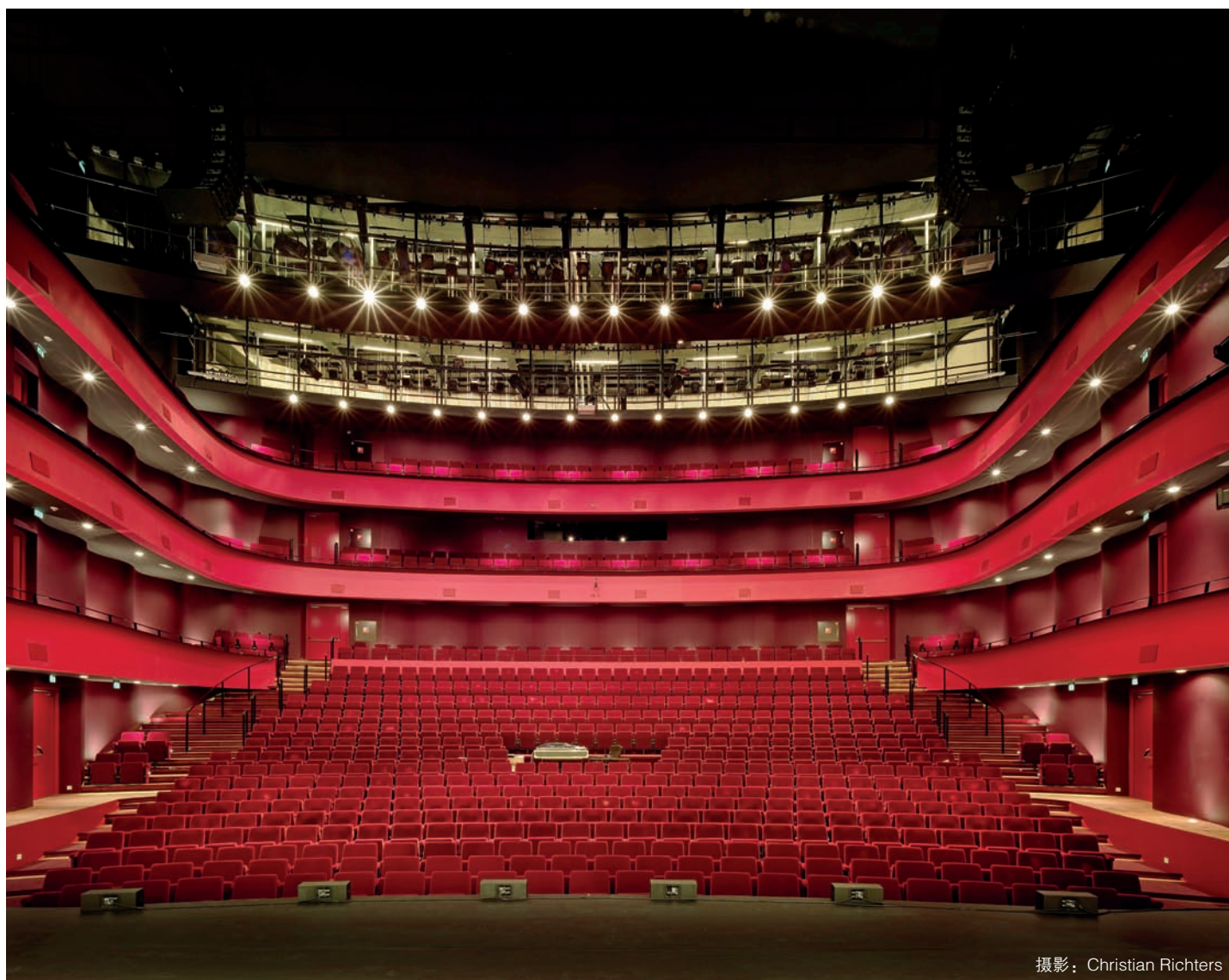
### red carpet

Amphion Theatre, designed by Mecanoo, takes the place of the former and successful Amphion Theatre of the seventies which needed replacing. With its slightly reclined facades, the theatre is anchored firmly to the Doetinchem ground. The sand-coloured masonry is interrupted by a playful pattern of square windows which appear to be strewn on the facades. The audience enters the theatre through the courtyard which takes the role of a red carpet. Red accented incisions mark the entrance, the theatre cafe and the green room. Once inside you venture into a world where warm red shaded tones prevail. A grand staircase leads to the theatre cafe, the central meeting place in the theatre from which the four foyers and large and small theatre halls are accessible. The beautifully detailed bar is set like a jewel in the double-height space. The window pattern in the façade creates surprising compositions, imbuing each space with its own character. The windows appear like paintings overlooking the city, sometimes serving as a standing table or bench with their deep sills.

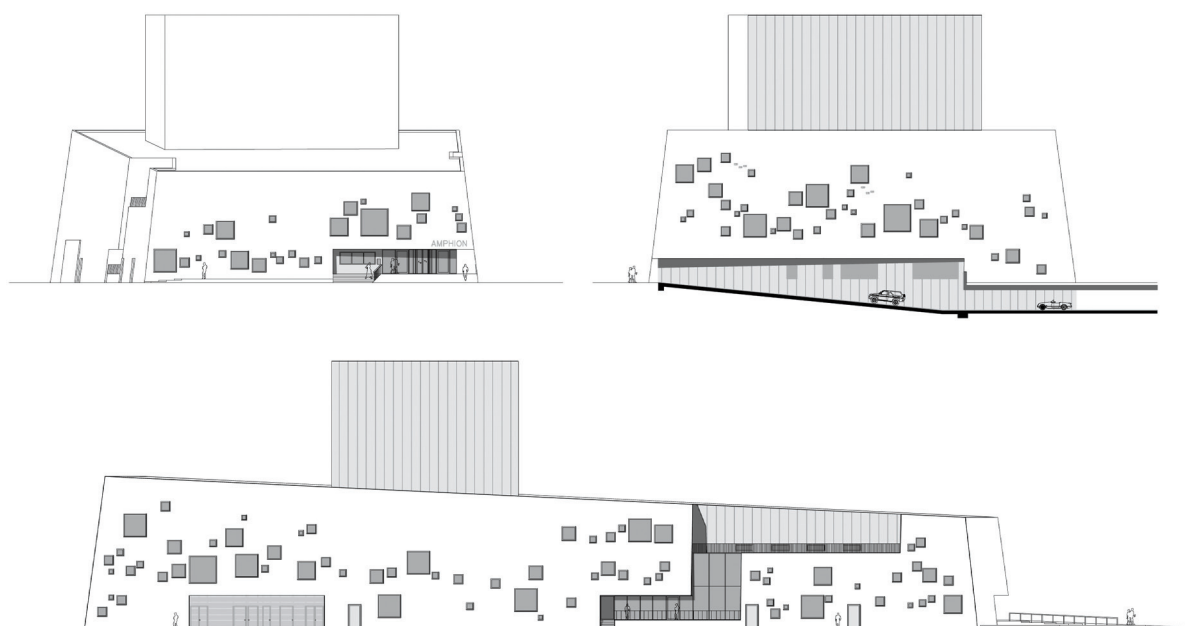
### theatres as treasure chest

The large 860 seat auditorium is like a treasure hidden within the building. Only the fly tower on the exterior betrays the presence of the auditorium. The intimate horseshoe-shaped room in various shades of red is reminiscent of the theatres of yesteryear. Three balconies encircle the theatre, seating the audience close to the stage. Visitors have a perfect view from every seat onto



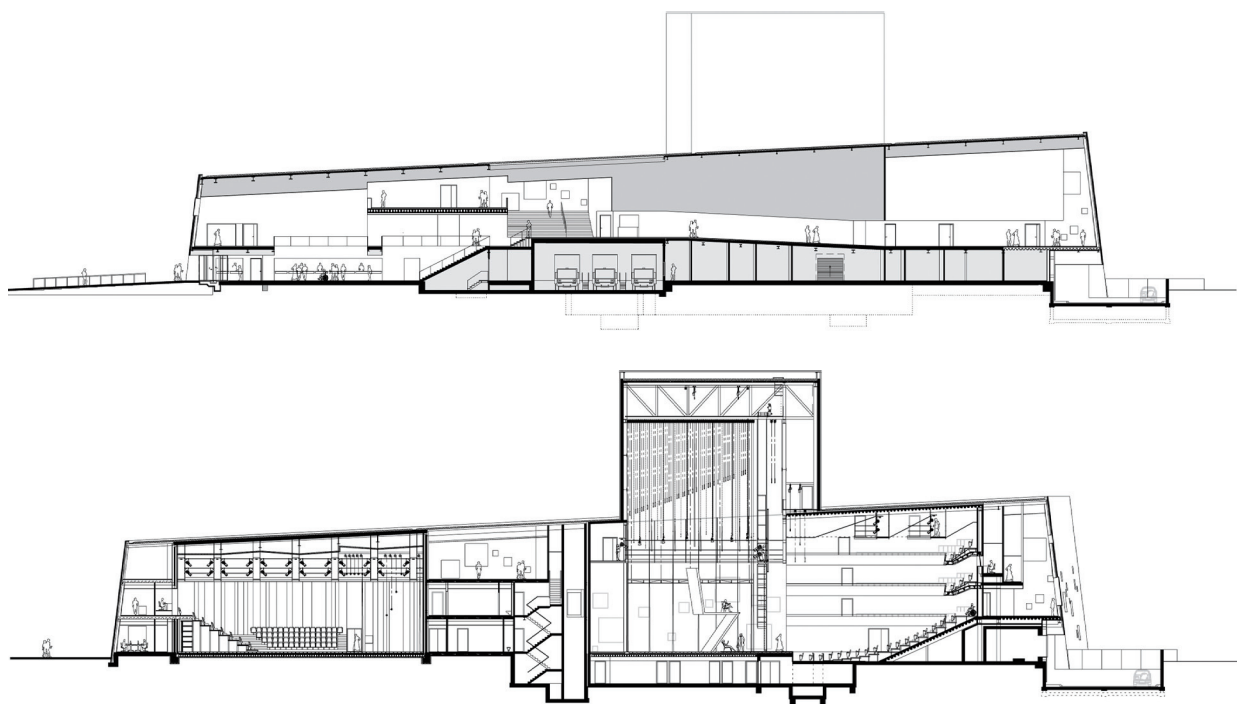


摄影：Christian Richters

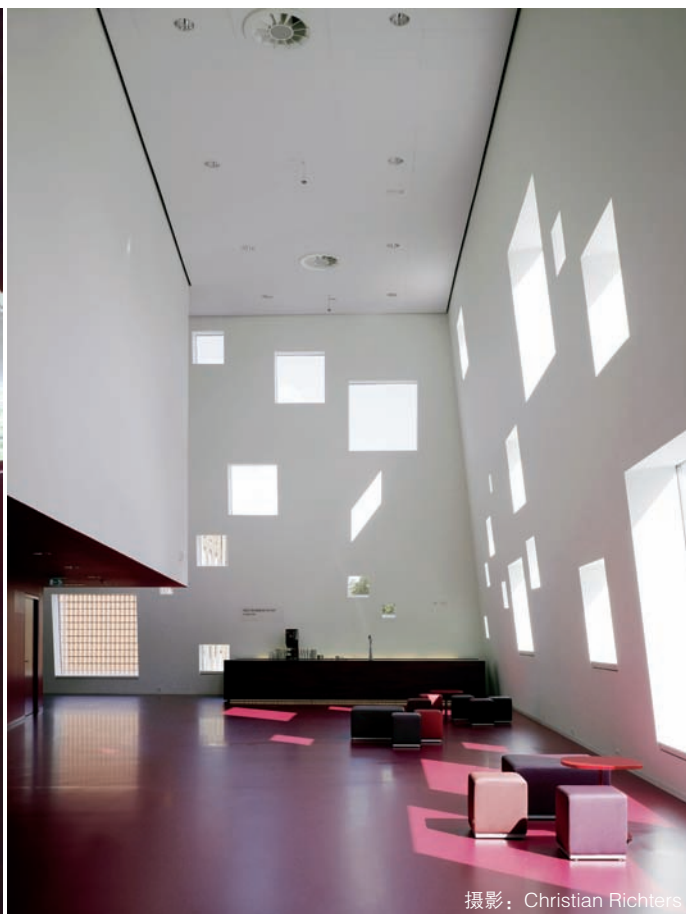


立面





剖面







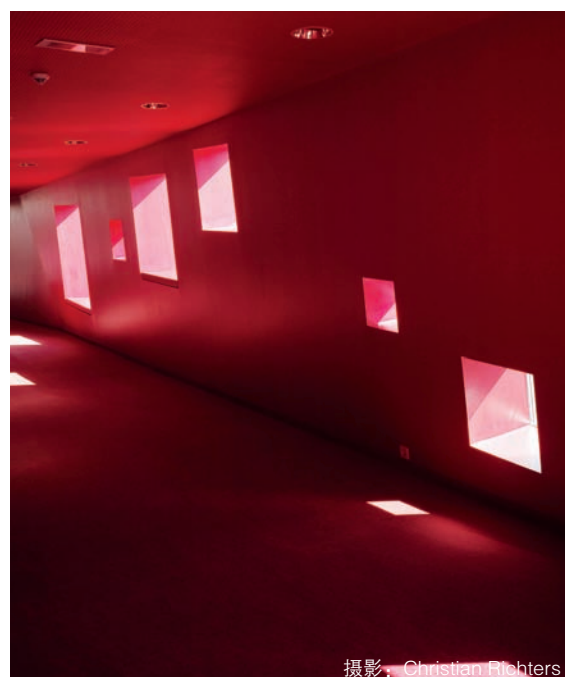
摄影: Christian Richters

the imposing 36 x 19 meter stage floor which is suitable for all large-scale theatrical productions.

The small 300 seat hall can be used as a Black Box and is almost an exact copy of the popular small theatre hall of the old Amphion. The U-shaped layout of movable stands ensures direct contact between actors and spectators. By moving the stands together, the venue is transformed into a concert hall or a ballroom.

#### **daylight in the workplace**

In the Amphion theatre, performances are changed at a relatively high speed. To facilitate this, efficient loading and unloading is required. Mecanoo provided the loading and unloading area with enough space for three 18-meter long trucks, centred between the stages of the two theatre halls located on the same floor level. This space can also be used to temporarily house stage sets or to exchange sets between the large and small theatre halls. The main hall is equipped with fully automatic features in the 29 meter high fly tower. Uniquely, the large and small theatre halls have windows, so that the technical staff has daylight in their workplace. **AT**



摄影: Christian Richters