

# VILLA GAMAGORI

蒲郡別墅







这个由家族企业建造的招待所用来接待包括当地政客在内的各种客人和家族直系亲属。建筑位于海滨度假城镇蒲郡，建于上世纪 30 年代、具有 Art Deco 风格的著名的蒲郡王子酒店就在这个招待所附近。

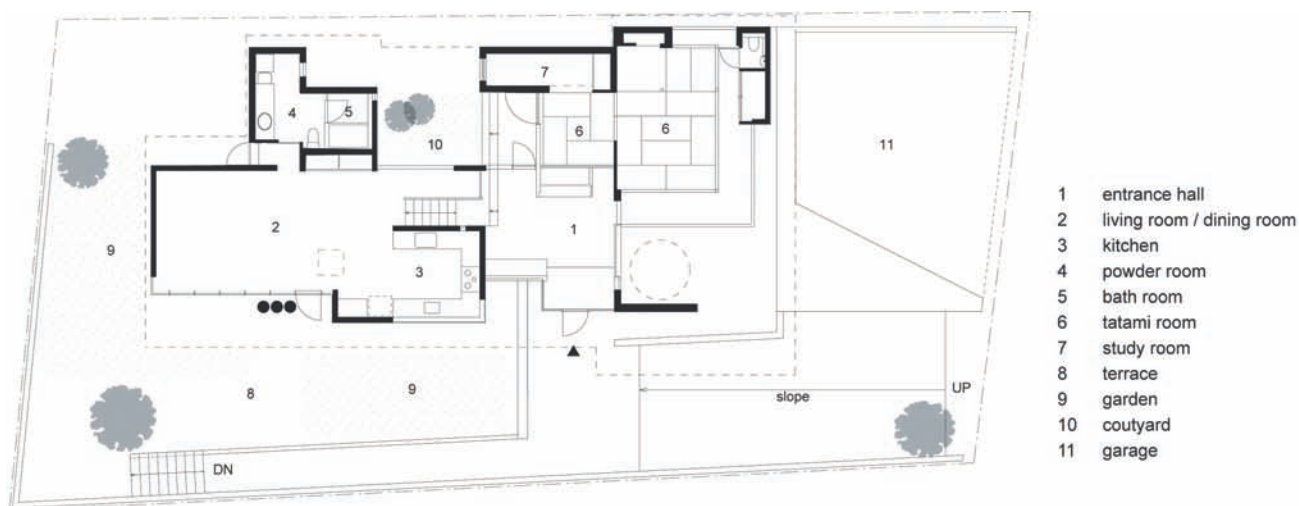
一根纵向分布的混凝土梁凸显了这个建筑的特色。为了支撑横向挑出的平顶和容纳厨房的空间，梁的长度达到 24m。

客人的散步方式与环境是设计考虑的重点。进入的路面有一定坡度，在入口处，客人们可以选择从左边走或者从右边走，然后通过平缓的玻璃台阶下到 4m 高的客厅。

招待所的前花园和后院为客人提供了一个放松休闲的环境。三根用来支撑长梁的柱子成为建筑正面的焦点，并引导客人进到主要入口通道。后院的焦点是一座连接东西的桥，同时也是这个招待所内部空间的主要特色。尤其是当人们从入口大厅进来，踏步在平缓的玻璃台阶上时，可以在进入客厅前感受一下院子亲切温馨的氛围。

This guest house, initiated by the family owned company, is to function hosting various guests including local politicians, and the family's immediate relatives. The town, Gamagori is well known for its coastal resort applause. Near this project site, the elegant Art Deco styled Gamagori Prince Hotel is located. This historically well known hotel is dated back to 1930's.

A longitudinally running concrete beam defines the major character of this building. Its length goes beyond 24meters so to hold the horizontality emphasizing flat roof and to contain the kitchen's cubic volume.







The promenading quality of architecture is aimed. The approach route is inclined. At the entry point, people have two choices whether to go to the right or to the left. Gradually descending on the tempered glass steps, people reach to the living room. It is nothing but the climax of the space with the ceiling height of approximately 4 meters.

The front garden and the back patio are expected to provide relaxing ambience for this guest house. Three columns to support the above described long beam becomes the focus of the frontal appearance, which invite people to the main entry sequence. The bridge running from east to west is the focus of the back patio provides the major character to the interior space. Particularly when people proceed from the entrance hall, stepping on the tempered glass steps, they enjoy this intimate patio, just before reaching to the living room. **ATI**