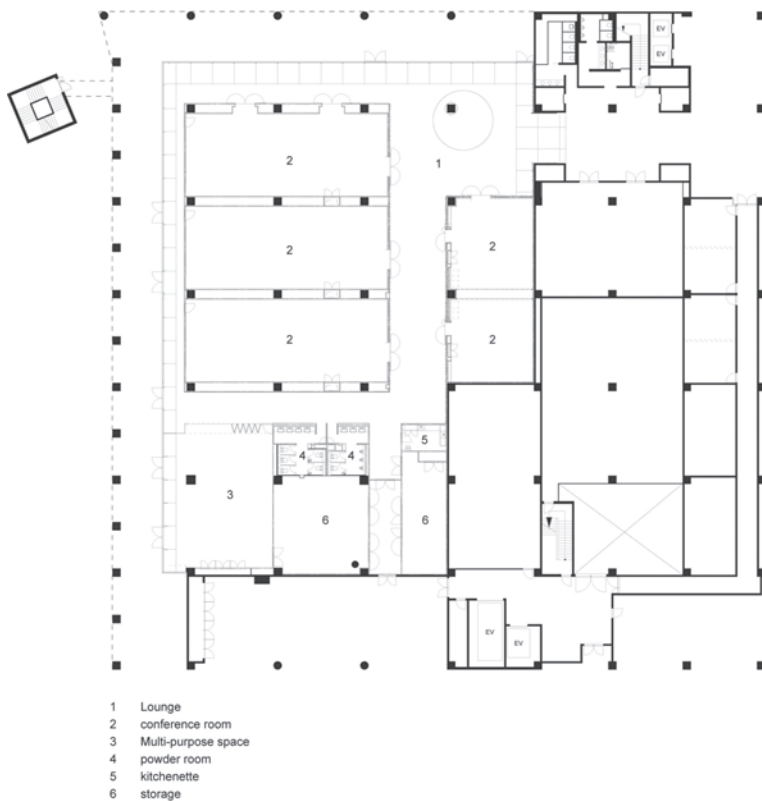


RENOVATION OF THE INTERNATIONAL CONGRESS HALL OF MAKUHARI MESSE

幕张国际展览中心议会大厅翻新

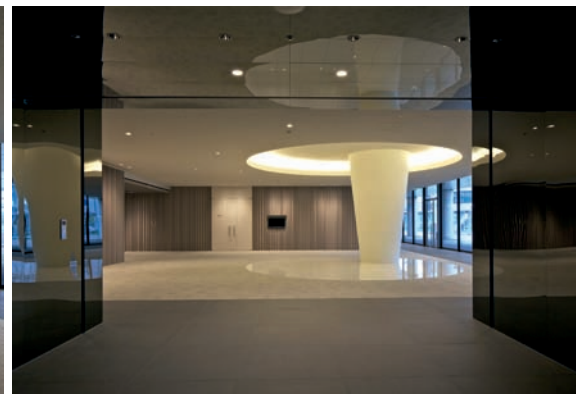


这项翻新工程的推出是为了融合被认为是首都东京副中心的幕张中央商务区成熟的风格。工程内容广泛，从室内设计到附近地区的城市规划都包含在内。

幕张国际展览中心拥有 13 万 m^2 的占地面积，建造于 20 年前。它曾经有自主运营的餐厅，不时招待 VIP 客人。由于在建成初期，这个建造在千叶海边的闲置垃圾填埋场上的会展中心周围并没有餐馆，所以展览中心内的自营餐厅就显得尤为重要。当时不存在任何支持会展相关活动的设施，所幸这种绝对空白期没有持续很久。各种大型商业开发使得幕张地区很快发展起来，到今天，幕张地区已经成为东京的副中心。

这项工程目的在于更换原有的餐厅设施，并增设 6 个全新的会议室，还尝试更新面向火车站和附近豪华酒店的会展中心立面。室内设计方面则以休息大厅内玉米形状的柱子为重点。

值得注意的是大厅入口处的大门，它用熏黑的不锈钢制成，给人一种宾至如归的感觉。







This renovation project resulted from the matured urbanity of the Makuhari CBD, which is regarded as the sub-center of the capital city, Tokyo. This architectural renovation project spans from the issue of interior design to that of the urban design in the vicinity.

The big convention center, Makuhari Messe with the total floor area of 130,000 square meters, was constructed in 20 years ago. It used to have the self-contained restaurant facilities occasionally to host V.I.P guests. These worked very importantly, because no restaurant, in the vicinity of this newly constructed convention center on the vacant landfill site along the Chiba Coast, existed in the first couple of years of its opening. Nothing existed to support the various activities related to the convention activities. This absolute vacancy fortunately did not last too long. Various large-scaled commercial developments occurred to make the Makuhari area prosperously matured. In these days, Makuhari area is now being called as the sub-center of Tokyo.

The project aimed at the replacement of the old restaurant facility. It brought the newly-installed 6 meeting rooms. It also tries to offer the updated and animating façade, particularly to the main approach from the train station, as well as from the adjacent luxuriously hotels. The interior design has a focal point, which is nothing but the inverted corn-shaped column located in the lounge area.

Noteworthy is the gate from the existing entrance lobby. This gate is an important threshold to provide a sense of arrival. People can easily make themselves ready toward the convention activity. This gate is made of the blackened shiny stainless steel. **AT**

