

NAMBA PARKS, OSAKA, JAPAN

难波公园

业主：Nankai Electric Railway Co., Ltd, Takashimaya

占地面积：33 710m²

总建筑面积：243 800m²（零售与娱乐设施：86 000m²（124所店铺，2 164座电影院）；办公区域：36 000m²；住宅（344单元）；38 000m²；露天/绿化：25 000m²；文化设施：2 700m²；停车场：17 000m²，1 251个车位）

建成开放：2003.10（一期），2007.04（二期）

零售、住宅、景观设计：The Jerde Partnership（其中住宅与Obayashi合作设计）

总承包：Obayashi Co., Ltd.

办公塔楼建筑设计：Nikken Sekkei

摄影：Hiroyuki Kawano



概述

位于日本大阪的难波公园是个充满活力的城市生活商业中心，为高密度的大阪市中心注入了一抹沁绿。公园四处遍布了精心设计的绿化景观，自然元素无处不在，同时包括特色零售商店、娱乐和餐饮，成为了市民文化休闲的新去处。公园毗邻难波火车站，距离关西国际机场仅一站之遥，是进入大阪市的新门户。

项目背景

占地3.37ha的难波公园原址为一个21 000座的南海体育场（Nankai Stadium），对体育场的重新开发是大阪市的重大城市改建工程。项目地处大阪市的重要交通枢纽之一，当地企业南海电气铁道株式会社决定将体育场改建成新的城市中心，以成为通往大阪市的新大门。

南海电气铁道株式会社邀请了Jerde建筑设计事务所来设计这个项目。Jerde此前在日本福岡设计的Canal City Hakata项目大获成功，该项目将一片老旧的工业用地改建成了充满活力的商业社区中心，由此带来的经济效益也十分显著，并连带为周边已有的购物中心重新注入了活力。Canal City Hakata项目通过引入河流将自然元素带入城市；类似地，Jerde为难波公园商业圈设计了一个阶梯式公园，以此来滋润粗糙的城市肌理。

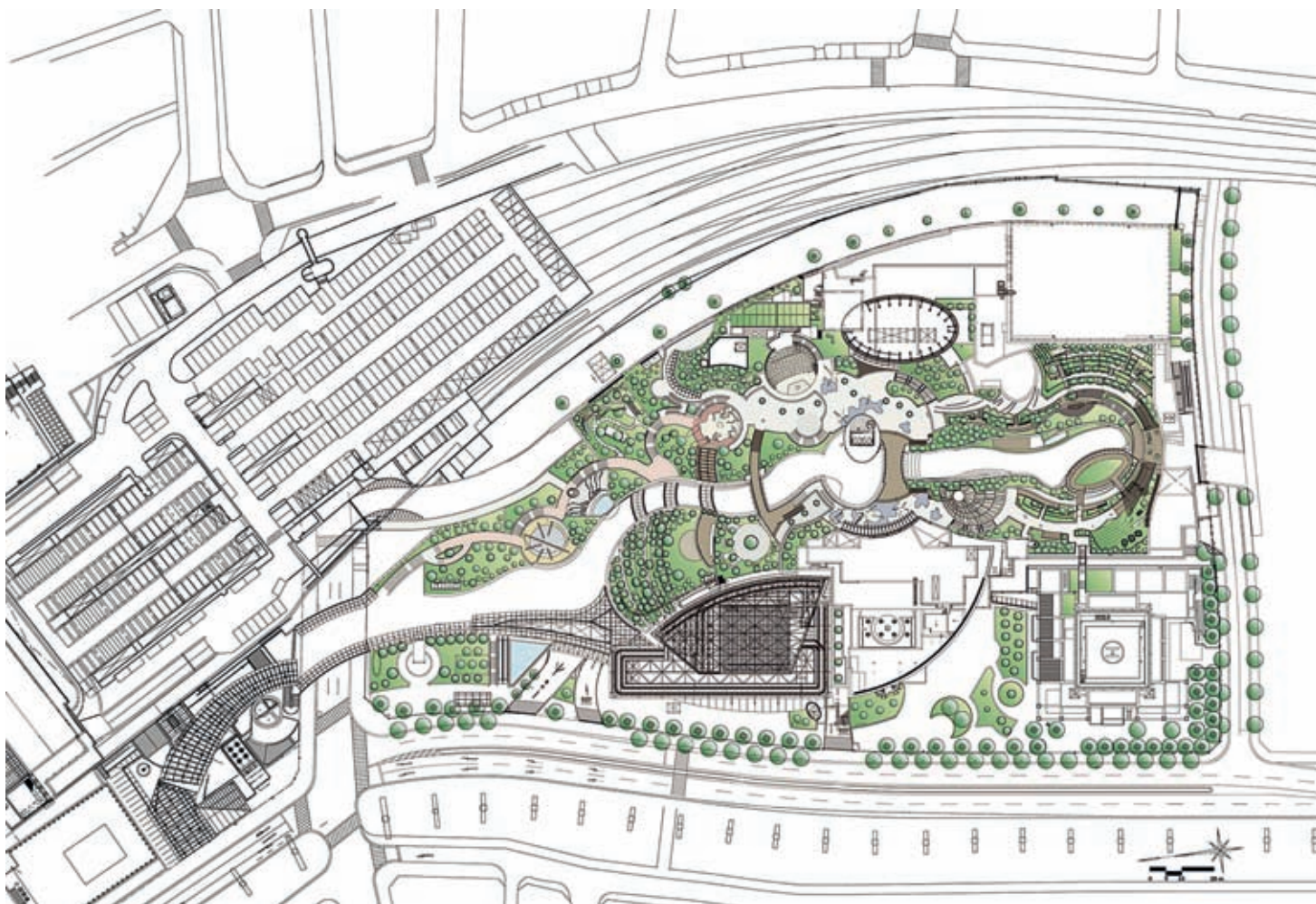
Overview

Namba Parks, a vibrant lifestyle center, inserts a much-needed natural amenity into Osaka's dense city core. Namba Parks generously weaves rich landscaping and other natural elements with specialty retail, entertainment and dining, creating a new unique place that celebrates the interaction of people, culture and recreation. Located adjacent to Namba Train Station, the first stop on the new line connecting the city to Kansai Airport, Namba Parks is a key gateway project for Osaka that will redefine the city's identity and urban experience.

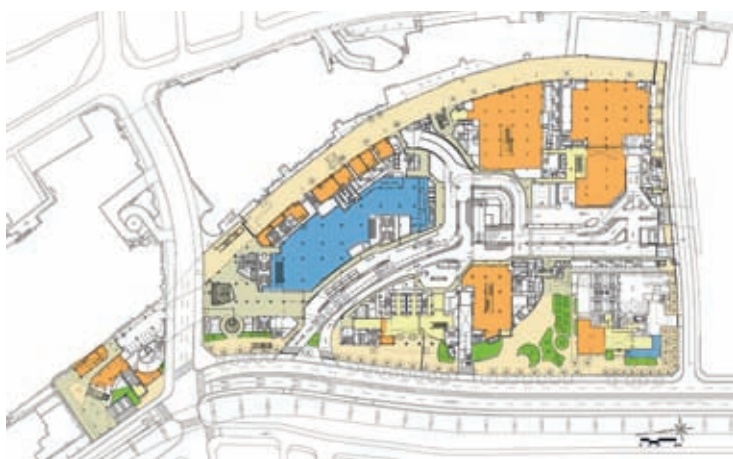
Background

The 3.37 hectare site of the former Nankai Stadium presented a prime redevelopment opportunity in Osaka. Given the site's position as one of the few great nodes of human arrival into Osaka, local rail conglomerate Nankai Electric Railway decided to convert the site into a new urban center that would serve as a gateway to the city.

Nankai Electric Railway selected Jerde to design the project due to the firm's success with Canal City Hakata, which converted a former industrial site in Fukuoka into a vibrant commercial and community center that triggered significant economic value and helped revitalize a nearby historic retail center. Canal City Hakata prominently used water to introduce a natural component to the urban site; similarly, Jerde's design for Namba Parks introduces a sloping park into the site's harsh urban context.



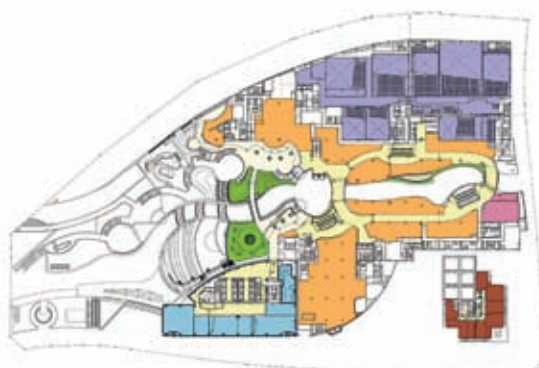
屋顶平面图



一层平面图



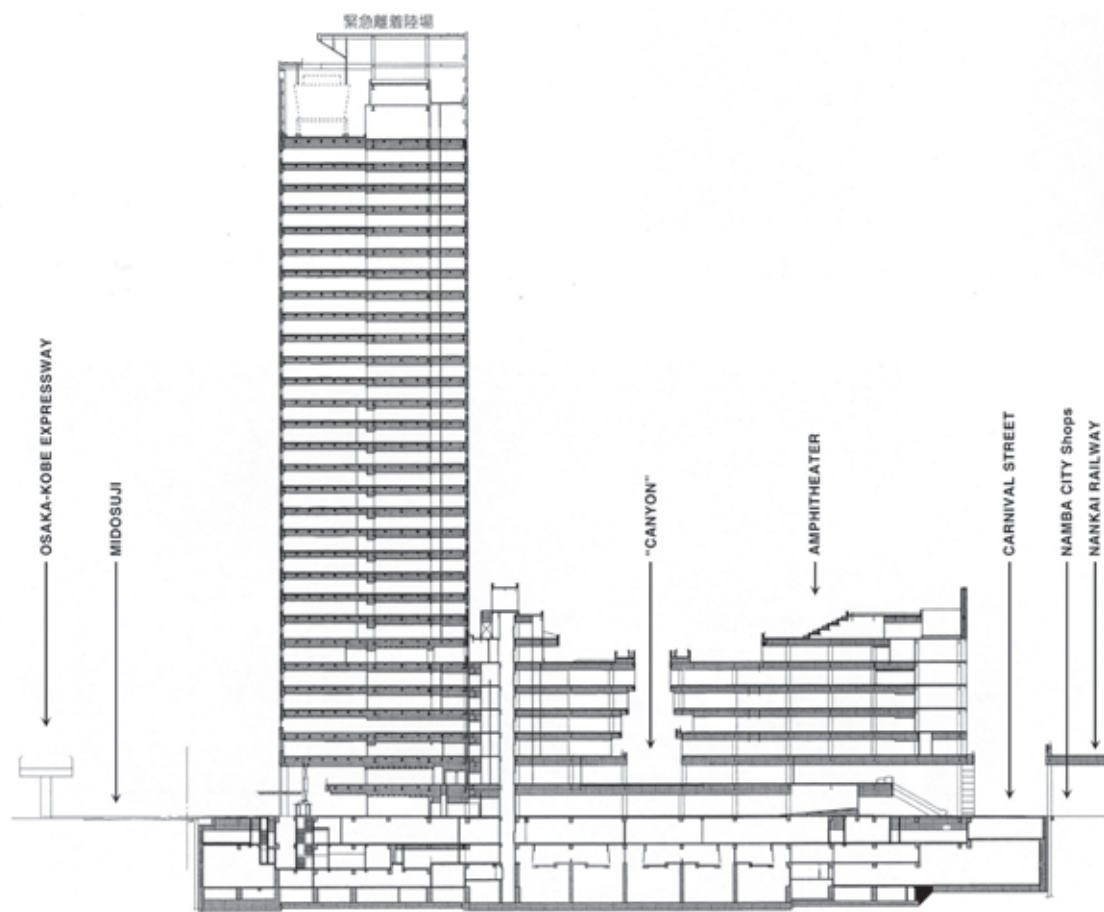
五层平面图



七层平面图



八层平面图



剖面图

设计

Jerde建筑设计事务所的许多项目设计灵感皆来自于大自然的力量，因为自然既是可再生力量，又是一种融贯东西、串连古今、众人皆赞的元素。难波公园项目中，Jerde设想将自然融入城市，将难波公园设计成一片可以放下快节奏城市生活的自然天地——创造大阪市的新生活体验。

项目内部犹如峡谷。设计构思源自开发商的一个要求，他们希望有一条简单的混凝土走廊能够连接南北两片区域，为此Jerde提出了人工峡谷的想法。各色石材堆叠成“峭壁”，人工峡谷在作为商场最重要的交通要道的同时强调了项目与自然的联系。这片峡谷通道经过巧妙的设计营造了一片神秘的氛围，构造出一片错落的弯道、山谷、洞穴及其他探索空间。峡谷不同高度处都设计了直接连接外部阶梯的出口。峡谷两边通过玻璃空中走廊连接，夜里宛如发光的电弧管，同时峡谷内的采光来自上方公园的自然照明。

难波公园的零售与娱乐场所呈“8”字形排布，沿着人工峡谷内侧层层攀升到屋顶公园。一系列购物广场，或有流水布景，或在举

Design

Many Jerde projects are inspired by the power of nature as both a regenerative force and a universally understood element that connects old and new, East and West. In Namba Parks, Jerde conceived of nature as a form of urban intervention and designed Namba Parks as a natural amenity that offers relief from the hard, bustling city—and creates a new experience for Osaka.

The project's interior is a man-made canyon. Originally conceived by the client as a simple concrete passageway to connect the north and south parcels of the project site, Jerde proposed a canyon instead. Constructed from band of colored stone, the canyon reinforces the project's connection with nature while forming the primary circulation pattern. This path is carefully sculpted to produce a sense of mystery and create a variety of coves, caves, valleys and other exploratory spaces. At selected locations, varying with each level, direct access from the canyon is provided to outdoor terraces located on the park plane. Glass bridges connect the two sides of the canyon, by night becoming arcing tubes of light. All vertical spaces are sky-lit from the park above.

Namba Parks forms a dramatic new identity for the city. Alongside a 30-story office tower and 46-story residential tower, the project features a new lifestyle commercial center with a rooftop park that crosses multiple blocks while gradually ascending eight levels from the streets of the city. The sloping nature of the park serves as a green and highly visible oasis in a city where nature is





办活动，徜徉其中好像身处于一个不间断的发现之旅。位于项目中心位置的大广场共3层高，绿荫环绕，流水叮咚，散发着活力。

难波公园成为了大阪市的新地标。从城市街道逐步向上延伸至八层，这片建造于屋顶的公园横跨了城市的不同街区，难波公园项目连同附近的30层办公楼和46层住宅楼一起，打造出全新的城市商业区的生活形态。从八层屋顶串联而下的是另一个创意设计，即一系列阶梯绿化种植在下层零售商店的屋顶上。峡谷的主题一直延伸至屋顶，Jerde将峡谷顶端的景观同样设计到了峡谷的峭壁上。屋顶花园总面积达1.15ha，是日本最大的屋顶花园，其概念与难波公园的零售空间“大商城”概念相呼应。屋顶公园中有绿树、微型池塘、灌木林、种植池，全部由餐厅的废水经过滤处理后再进行灌溉。在夏季，当一般沥青表面达到51℃，混凝土表面达到45℃时，屋顶花园的环境温度却

只有34℃。在远离自然的城市环境中，这片阶梯公园宛如绿洲。通过与城市街道相连，公园吸引人们来到这片由树木、草丛、流水、阶梯绿化包围的休憩场所，人们在此可以聚餐、阅读、交流，抑或俯瞰城市风景。（译/严佳钰，校/吴春花）

sparse. By connecting to the street, the sloping park plane will draw people up and into the project among groves of trees, green spaces, water features and outdoor terraces, where they can dine, read, socialize, or simply taking in views of the city.

Namba Parks' retail and entertainment venues are accessed through a "figure 8" circulation path that ascends through the canyon interior up the sloped park plane. A series of plazas, each with a water feature or event, create a sequential path of discovery. At the center of the project is the grand plaza, a three-story tactile and organic space embellished with greenery, foliage and water to rejuvenate the spirit. 