

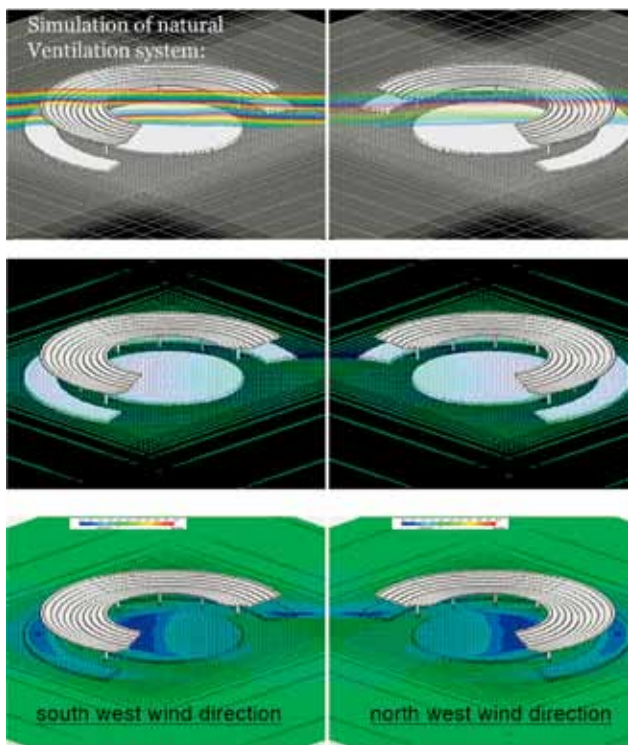
wNw Café

wNw 咖啡屋

建筑设计 Vo Trong Nghia Co.,Ltd.







众所周知，越南人对竹子是非常熟悉的。竹子被广泛应用于多个领域，例如建造、装饰材料、手工艺品、餐具等等。在wNw咖啡屋中，建筑师再次挖掘了竹子的特质——友好但又非同寻常。

wNw咖啡屋利用当地的传统建筑手法创建一个脱离嘈杂城市环境的独特空间。在设计过程中，建筑师利用了空气动力学原理，采用计算机对空间进行模拟来研究风速和水的降温能力。这些模拟使得建筑师能够有效地减少建筑对电能的使用，例如空调，从而降低建筑的能耗成本。

整个建筑采用越南传统的建造技术，用7 000根竹子搭建而成。整个竹结构没有采用混凝土柱子来支撑，但应用了环形的金属支撑体。“V”字型的屋顶设计与周围的树木相映成趣，创造出开放的空间和美丽的景致。

咖啡屋被人工的湖泊所环绕，湖泊加强了人们对环境的感知能力。当你第一次望向湖面，会觉得湖水深邃而神秘，但其实湖水也仅仅只能没过膝盖。这是由于深色的石头和曲面的湖底带给人的错觉。当人们在湖面上享受咖啡的美味时，仿佛感觉自己又回归自然和美好平和的生活状态。（译/朱晓琳）

It is well known that Vietnamese are familiar with bamboo. It is used for many different purposes, in constructions, as finishing materials, hand crafts, in meals. In the wNw cafe the beauty of bamboo has been rediscovered – friendly but extraordinary.

wNw cafe utilizes local and traditional architectural features to create an alternative/ escape from the chaotic surrounding city.

The project uses the principles of aerodynamic design. When designing the café, computer simulations of the spaces were used to study the airflow and the cooling capacity of the water. These studies have allowed us to reduce the use of electrical energy such as air conditioning, lowering the buildings energy costs.

The whole building is constructed by 7,000 bamboo elements which have been treated using traditional Vietnamese methods. The bamboo structure has no concrete columns, but uses wire bracing supports. The V-shaped roof relates to the surrounding trees and creates an open space with breathtaking views.

The café is surrounded by artificial lakes. The lake brings the surroundings closer to the observer. At the first glance the lake gives the impression of being very deep, but is actually just knee high. It is the black stone and the curved bottom of the lake which give the illusion of the depth. The guests enjoy their coffee and feel like they are returning to nature and a peaceful life. 