

瓦伦西亚市警察厅

Municipal Police Headquarters Valencia Spain

客户 瓦伦西亚市议会

总建筑面积 2 000m²

建筑设计 Foreign Office Architects

预算 250 万欧元

摄影 Cristobal Palma Ramon Pratt

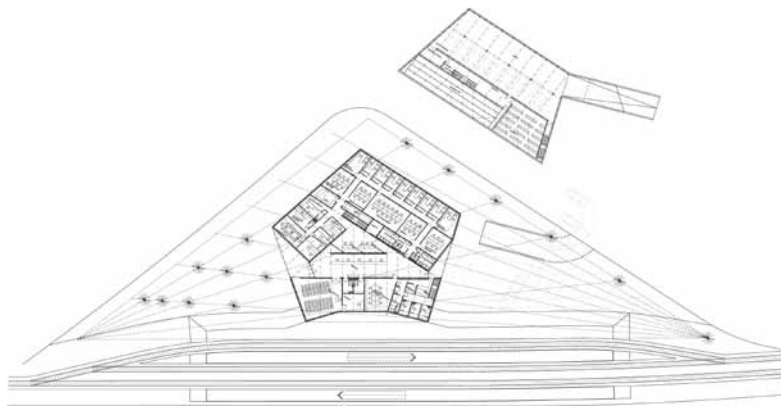


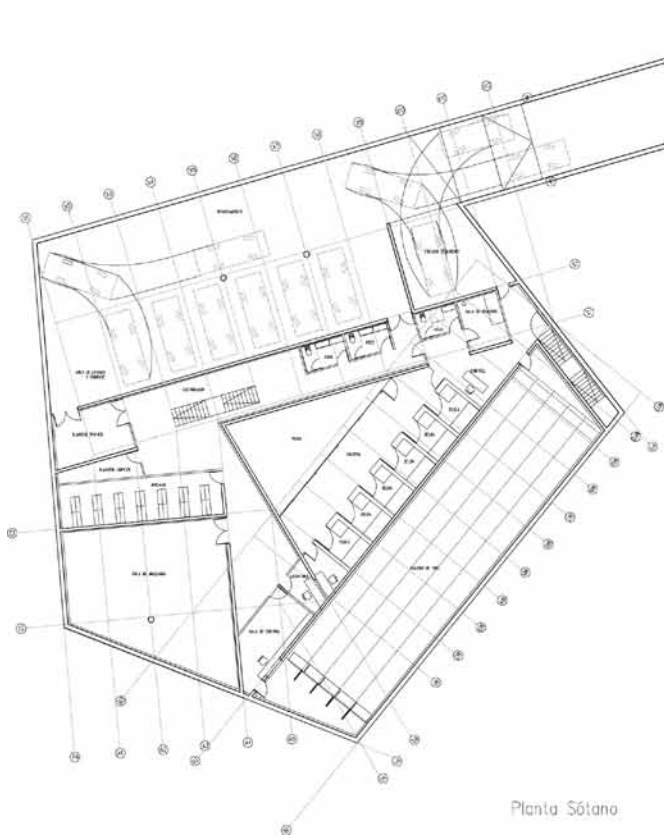
项目选址在城镇未来发展规划中占据重要战略地位的位置：一个由铁路车站和通往城镇中心的主要高速路围成的三角形区域。新方案是一个市警察厅，平面为非标准的五边形，周围被街道与景观环绕。

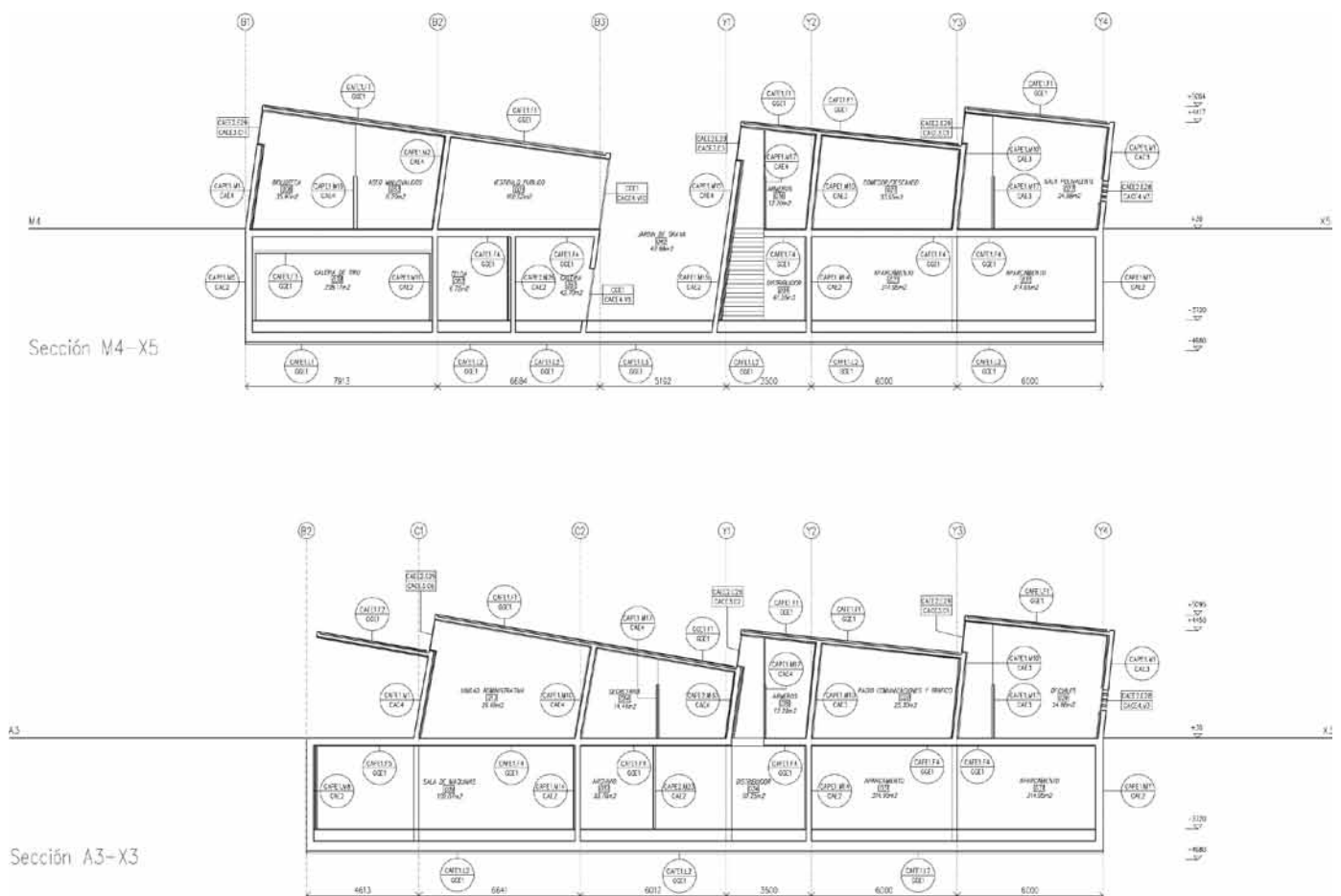
建筑平面的中心思想是要保持其紧凑性，减少对城市与北部发展区之间的阻隔，同时在当地漩涡般的流通区形成核心稳定区。由于当地众多的山体与剩余农田的背景，我们试图尽量降低建筑的高度，使之成为周围乡村景观的元素之一。

建筑平面由三片海湾组织而成，围绕中心庭院而建，阳光可直接射入首层的少年看守所。建筑内部分为三个部分：1）包括会议厅、图书馆、证人室的公共空间；2）行政与导览空间；3）军官与各种军队团体接待空间。地下空间包括一个警车停车场、射击练习场与记录办公室。

建筑为混凝土壳体结构，沙石材料均来自本地，一系列天窗有助于为各个房间引入天然光。建筑外墙上包含一系列孔洞，这些晶格带来了室外景观又保持了室内的私密性。（译/李昭君）







This project addressed a strategic location in the future development of the town: a triangle delimited by the railroad station and the main highway access to the town centre. The program is the new Municipal Police Headquarters. The building footprint, an irregular pentagon, was determined from its alignments with the neighbouring streets and views.

The central plan tries to keep the building as compact as possible, minimising the blockage between the city and its northern development while producing a core of stability in the local vortex of circulation. With a background dominated by a large mountain and the remnants of local farmland, we tried to keep the mass as low as possible, as though the building were just another wall in the surrounding rural landscape.

The plan is organised in three bays around an inner courtyard which lets

light into a detention centre on the basement level. Within the building there are three bands: one is a public interface comprising an auditorium, library and witness room, the second is given over to the administration and direction of the complex while the third hosts officers quarters and various different brigades. In the basement there is a parking lot for police vehicles, a shooting gallery for training and a records office.

The building is constructed as a concrete shell, using the local sand surrounding the facilities, with a series of skylights to introduce natural daylight to the dependencies. The exterior walls are pierced by a series of holes, producing lattices for the wall openings and permitting views outside while still remaining protected.